

CLW

0000000010

LUB AND 95

RECORD

7530-222-3525

FEDERAL SUPPLY SERVICE

(GPO)

1 - Pound - 2.3.1' - F.T. HEAD

MAX - 51

10-B

1 - ST - 49½

2 - ND - 48

3 - ND - 47

4 - ND - 46

CLW

000006611

CLW

000006612

CLW
000006613

CLW

GAS

0000006614

- 11-21-73 - 546 gal Gas @ J.P.
- 1-10-74 - 112 gals Gas Bldg 671 J.P.
- 4-18-74 - 175 gals Gas Bldg 671 J.P.
- 11-4-74 - 400 gal Gas Bldg 671 J.P.
- 1-22-75 - 235 gal Gas Bldg 671 P. Wells
- 7-22-75 Wells 1-5-7-8 - 430 gal of fuel
- 7-9-75 - 441 GALS GAS - BLDG 671 - MACK
- 9-24-75 - 230 - GALS GAS - BLD-671 - Morton
- 9-24-75 - 222 GALS GAS - at wells - 157+8
- 2-10-76 - 290 - GALS GAS - BLD-671 - Morton
- 2-16-76 - 265 - GALS in all the wells Morton
- 3-23-76 - 67 - GALS GAS in PLANT MOTORS CANNON
- 3-23-76 - 34 - gals GAS in #8 WELL J.C. CANNON
- 3-23-76 - 43 - GALS GAS in #1 WELL J.CANNON
- 9-20-76 335 gals Gas in Bldg #671 Morton
- 10-26-76 211 " " " " " " June
- 10-26-76 100 gal well no# 138 June
- 10-26-76 90 gal well no# 567 June

Gas to Post (30)

2 batteries for the Ford motor in pump house

- 614000 - 643-0495 - 11-12-76 - Motor
- 2-10-77 - 296 Gals in all wells - Carpenter
- 2-10-77 - 442 Gals in Bldg 671 - Carpenter
- 6-20-77 - 220 Gals in Bldg 671 - Smallwood
- 6-20-77 - 122 Gals in Bldg 647 - Smallwood
- 12-22-77 - Filled Tank Bldg 671 J. Parker
- 6-30-78 291 Gal Bldg 671 Carpenter
- 9-6-78 198 " Bldg 671 J. Parker

WJO

one electric # two electric # Three electric # 4 electric

Motor	Motor	Motor	Motor
Greased	Greased	Greased on	Greased
oil change	oil change	oil change	oil change
1-14-73	1-12-73	1-16-73	1-2-73
7-8-73	6-24-73	6-19-73	6-23-73
1-2-74	1-3-74	1-8-74	1-11-74
6-12-74	6-12-74	6-12-74	6-12-74
10-22-74	10-22-74	10-22-74	10-22-74
2-3-75	2-3-75	2-3-75	2-3-75
6-14-75	6-14-75	6-14-75	6-14-75
9-20-75	9-19-75	9-19-75	9-19-75
12-75-75	12-11-75	12-16-75	12-19-75

70

Page 16

CLW

000006615

1973

0000006616

2

#1 for motor	#2 for motor	#3 for motor	#4 for motor
oil change	oil change	oil change	oil change
Greased	Greased	Greased	Greased
1-22-73	1-22-73	1-22-73	1-21-73
Greased	Greased	Greased	Greased
4-18-73	4-18-73	4-18-73	4-18-73
oil change	oil change	oil change	oil change
Greased	Greased	Greased	Greased
8-14-73	8-14-73	8-14-73	8-14-73
Greased	Greased	Greased	Greased
12-5-73	12-5-73	12-5-73	12-5-73
Washers	Washers	Washers	Washers
Washers	Washers	Washers	Washers

Greased on oil change	Greased on oil change	Greased on oil change	Greased on oil change
1-2-74	1-2-74	1-2-74	1-3-74
Greased	Greased	Greased	Greased
4-1-74	4-1-74	4-1-74	4-1-74
10-17-74	10-17-74	10-17-74	10-17-74
OIL CHANGE &		Greased	Greased
4-12-75	4-12-75	4-12-75	4-12-75
10-8-75	10-7-75	10-8-75	10-9-75
1-16-76	Greased 1-14-76	1-16-76	1-15-76

TO PAGE 20

CLW

000006617

#1 Line Pump	#2 Line Pump	#3 Line Pump	4. Gould Pump
oil changed	oil changed	oil changed	oil changed
greased	greased	greased	greased
1-10-73	1-10-73	1-10-73	1-10-73
greased	greased	greased	greased
4-3-73	4-3-73	4-3-73	4-3-73
greased	greased	greased	greased
6-5-73	6-5-73	6-5-73	6-5-73
greased	greased	greased	greased
oil changed	oil changed	oil changed	oil changed
7-5-74	7-5-74	7-5-74	7-5-74
greased	greased	greased	greased
10-8-74	10-8-74	10-8-74	10-8-74
greased and oil changed	greased and oil changed	greased and oil changed	greased and oil changed
1-15-75	1-15-75	1-15-75	1-15-75
greased	greased	greased	greased
3-5-75	3-5-75	3-5-75	3-5-75
greased	greased	greased	greased
6-21-75	6-21-75	6-21-75	6-21-75
9-20-75	9-22-75	9-18-75	9-18-75
12-9-75	12-12-75	12-12-75	12-14-75

CLW

000006618

WLD

75:0000

PUMPING LEVELS & STATICS
WHEN WELLS INSTALLED

#	FT. STATIC	PUMPING LEVEL FT.
1	47	21.7
2	90	20.1
3	93	18.4
4	90	8.9
5	53	18.2
6	78	20.7
7	60	18.1
8	45	23.0
9	93	21.0
10	90	8.0

CLW

0000006619

WJO

01/25/00

WELL # 1 - BLDG. # 647 0000006620 4

DATE	STATIC	PUMPING LEVEL	DRAW DOWN	OIL CHAN. GAS MOTOR	MOTOR GREASED	ELEC. MOTOR GREASED	OPER. INTRYS
10-72	47	24'	23'	—	YES	YES	Bl
11-72	45	20'	25'	—	—	—	Bl
12-72	48	22'	26'	—	—	—	Bl
1-73	48	21'	27'	YES	YES	YES	Bl
2-73	44	—	—	—	—	—	Bl
3-73	46	20'	26'	—	—	—	Bl
4-73	50	26'	24'	—	YES	YES	Bl
5-73	49	29'	20'	—	—	—	Bl
6-73	47	23	24	—	—	—	Bl
7-73	46	21	26'	YES	YES	YES	Bl
8-73	44	33'	11'	—	—	—	Bl
9-73	45'	32'	13'	—	—	—	Bl
10-73	46	21'	25'	—	YES	YES	Bl
11-73	44	21'	23'	—	—	—	Bl
12-73	42	23	24	—	—	—	J.P.
1-74	46	21'	25'	YES	YES	YES	J.P.
2-74	44	33	11'	—	—	—	S.S.
3-74	49	29	20'	—	—	—	S.S.
4-74	46	21	25'	—	YES	YES	J.P.
5-74	45'	32'	13'	—	—	—	S.S.
6-74	46'	25'	21'	—	—	—	S.S.
7-74	46'	27'	19'	✓	✓	✓	Bl
8-74	47'	26'	21'	—	—	—	Bl
9-74	49'	24'	25'	—	—	—	Bl
10-74	49'	22'	27'	—	✓	✓	Bl
11-74	47'	21'	26'	—	—	—	J.P.
12-74	44'	24'	20'	—	—	—	S.S.
1-75	48'	28'	20'	✓	✓	✓	S.S.
2-75	52'	28'	24'	—	—	—	J.P.

Well #1 - CON'T Old 6217 000006621

DATE	STATIC	PUMPING LEVEL	DRAW DOWN	OIL CHANGE GAS MOTOR	MOTOR GREASED	ELEC. MOTOR GREASED	OPER INITIALS
3-75	48'	28'	20'				M
4-75	50'	28'	22'		✓	✓	
5-75	48'	34'	14'				
6-75	49'	29'	20'				
7-75	47'	22'	25'	✓	✓	✓	
8-75	52'	30'	22'				
9-75	48'	33'	15'				
10-75	50'	25'	25'		✓	✓	
11-75	46'	24'	22'				
12-75	47'	28'	19'				
1-76	49'	31'	18'	✓	✓	✓	✓
2-76	47'	26'	21'				
3-76	48'	29'	19'				
4-76	50'	31'	19'		✓	✓	
5-76	48'	21'	27'				
6-76	49'	22	27				Bl
7-76	46'	24'	22'				
8-76	48	24	24	yes	yes	yes	J.P.
9-76	47	23	26	✓	-	-	J.P.
10-76	48	22	26				
11-76	49	24	25		✓	✓	Bl
12-76	48	22	26				
1-77	49	24	25	✓	✓	✓	Bl
2-77	48'	20'	28				
3-77	49'	21	28'				
4-77	48'	19'	29		✓	✓	Bl
5-77	49'	23	24				
6-77	46'	29'	22'				
7-77	49'	24'	20'	✓	✓	✓	

700 FARE UP

WELL # 2 - BLDG. # 648

230 P.M.

5

DATE	STATIC	PUMPING LEVEL	DRAW DOWN	OIL CHANGE GAS MOTOR	MOTOR GREASED	ELEC. MOTOR GREASED	OPR. FILTERS
10-72	90'	20	70'	N/A	✓	✓	Bl
11-72	86'	18	68'				Bl
12-72	86'	12	64'				Bl
1-73	80'	13	67'		✓	✓	Bl
2-73	84'	—	—				Bl
3-73	85'	11	74'				Bl
4-73	88'	10	78'		✓	✓	Bl
5-73	87'	14	73'				Bl
6-73	87'	14	73'				Bl
7-73	90'	20	70'		YES	YES	Bl
8-73	88'	16'	72'		—	—	Bl
9-73	89'	10'	79'		—	—	Bl
10-73	88	17	71'		YES	YES	Bl
11-73	86	12	64'		—	—	J.P.
12-73	85	11	74'		—	—	S.S.
1-74	87	14'	73'		YES	YES	S.S.
2-74	84	16'	68		—	—	S.S.
3-74	86	12'	71'		—	—	J.P.
4-74	89'	20'	69'		✓	✓	S.S.
5-74	92'	19'	73'				S.S.
6-74	91'	19'	72'				S.S.
7-74	93'	23'	70'				Bl
8-74	90'	20'	70'				Bl
9-74	88'	21'	67'				Bl
10-74	85'	24'	61'		✓	✓	Bl
11-74	87'	20'	67'				Bl
12-74	87'	20	67'				J.P.
1-75	100'	56?	—		✓	✓	J.P.
2-75	68'	44'	24'				J.P.

CLW

0000006622

WELL #2-CONT

Bld 648

DATE	STATIC	PUMPING LEVEL	DRAW DOWN	OIL CHARGE GAS MOTOR	MOTOR GREASED	ELEC. MOTOR GREASED	OPER. INTRON
3-75	68'	—	—	N/A			+
4-75	78'	14'	54'	↓	✓	✓	↓
5-75	100+	28'	—				
6-75	64'	32'	32'				
7-75	89'	20'	69'		✓	✓	
8-75	91'	19'	72'				
9-75	100+	24'	—				
10-75	100+	24'	—		✓	✓	
11-75	99'	21'	78'				
12-75	98'	23'	75'				
1-76	100+	23'	—		✓	✓	
2-76	98'	24'	74'				
3-76	96'	21'	75'				
4-76	87'	24'	63'		✓	✓	
5-76	94'	20'	74'				
6-76	99'	21'	78'				Bl
7-	98	20	78'	—	✓	✓	
8-76	99	20	76'				Bl
9-76	98	20	75'	—			J.P.
10-76	98	22'	76		CLW		Bl
11-76	99	22'	77	0000006623			
12-76	98	22'	76				
1-77	99	22'	77'	—	✓	✓	Bl
2-77	100	35'	80'				
3-77	90'	20'	70'				
4-77	98	19'	79	—	✓	✓	Bl
5-77	100	23'	87'				
6-77	99'	22	77'				
7-77	98'	19'	77'		✓	✓	

TO PAGE 42

WELL #3 - BLDG. # 649

DEL. SYSTEM	DATE	STATIC	PUMPING LEVEL	DRAW DOWN	DEL. CHANGE GAS MOTOR	MOTOR GREASED	ELEC. MOTOR GREASED	OPER. DUTY
X	10-72	86	22	64	N/A	YES	YES	Bl
	11-72	88	21	67		-	-	Bl
	12-72	90	20	70		-	-	Bl
	1-73	90	22	68		YES	YES	Bl
	2-73	89	21	67		-	-	Bl
	3-73	90	20	70		-	-	Bl
	4-73	88	21	67		YES	YES	Bl
	5-73	87	21	66		-	-	Bl
	6-73	86	22	64		-	-	Bl
	7-73	90	20	70		YES	YES	Bl
	8-73	88	21	67		-	-	Bl
	9-73	88	21	67		-	-	Bl
	10-73	86	22	64		✓	✓	J.P.
	11-73	87	23	64				J.P.
	12-73	87	-	-				J.P.
	1-74	86	26	40		✓	✓	J.P.
	2-74	89	21	68				J.P.
	3-74	86	23	63				J.P.
	4-74	89	20	69				J.P.
	5-74	87	21	66				J.P.
	6-74	88	24	64				Bl
	7-74	90	27	63		✓	✓	Bl
	8-74	87	26	61				Bl
	9-74	86	20	66				Bl
	10-74	90	21	69		✓	✓	Bl
	11-74	88	22	66				S.S.
	12-74	87	27	60				S.S.
	1-75	69	20	49		✓	✓	S.S.
	2-75	69	19	50				J.P.
	1-3-87			10				

CLW
0000006624

WE

WELL #3 - CON'T

Old 649

DATE	DATE	STATIC	PUMPING LEVEL	DRAW DOWN	OIL CHANGE GAS MOTOR	MOTOR GREASED	ELEC MOTOR GREASED	WEL INT.	
3-75	3-75	70'	—	—	N/A			M	
4-	4-75	69'	—	—	↓	✓	✓	JP	
5-	5-75	75'	20'	55'		JP			
6-	6-75	68'	21'	47'		JP			
7-	7-75	90'	—	—		✓	✓	JP	
8-	8-75	79'	25'	54'		JP			
9-	9-75	89'	—	—		JP			
10-	10-75	90'	21'	69'		✓	✓	JP	
11-	11-75	88'	24'	64'				JP	
12-	12-75	90'	23'	66'				JP	
1-	1-76	90'	20'	68'		00000006625			↓
2-	2-76	89'	20'	70'					
3-	3-76	89'	22'	68'					
4-	4-76	90'	24'	68'	—	✓	✓		
5-	5-76	90'	—	—					
6-	6-76	93	—	—				Bl	
7-	7-76	96	12	84		✓	✓	Bl	
8-	8-76	97	14	84		yes	yes	JP	
9-	9-76	94	22	82	—	✓	✓	JP	
10-	10-76	92	—	—		—	—	Bl	
11-	11-76	90	23	67'					
12-	12-76	94	22	72					
1-	1-77	89	24'	65'		✓	✓	Bl	
2-	2-77	92'	—	—					
3-	3-77	87	—	—					
4-	4-77	92	24'	68	—	✓	✓	Bl	
5-	5-77	94	—	—					
6-	6-77	99'	—	—					
7-	7-77	96'	—	—	—	✓	✓		

TO PAGE 44

Well # 4 - BLDG. # 650

DATE	INSTR.	DATE	STATIC	PUMPING LEVEL	DRAW DOWN	OIL CHANGE GAS MOTOR	MOTOR GREASED	ELEC. MOTOR GREASED	OPER. CONDITION
10-72	JP	10-72	90'	10'	80'	N/A	✓	✓	Bl
11-72	JP	11-72	89'	11'	78'				Bl
12-72	JP	12-72	85'	12'	73'				Bl
1-73	JP	1-73	87'	10'	77'	—	YES	YES	Bl
2-73	JP	2-73	86'	9'	79'	—	—	—	Bl
3-73	JP	3-73	89'	10'	76'	—	—	—	Bl
4-73	JP	4-73	86'	8'	78'	—	YES	YES	Bl
5-73	JP	5-73	88'	9'	79'	—	—	—	Bl
6-73	JP	6-73	86'	9'	77'	—	—	—	Bl
7-73	JP	7-73	87'	10'	77'	—	YES	YES	Bl
8-73	JP	8-73	86'	8'	78'	—	—	—	Bl
9-73	JP	9-73	86'	10'	76'	—	—	—	Bl
10-73	JP	10-73	88	9	79'	—	YES	YES	JP
11-73	JP	11-73	89'	9'	80'				JP
12-73	JP	12-73	87'	11'	76'				JP
1-74	Bl	1-74	90'	10'	80'		✓	✓	JP
2-74	Bl	2-74	89'	—	—				JP
3-74	JP	3-74	87'	13'	74'				JP
4-74	JP	4-74	86'	12'	74'				JP
5-74	Bl	5-74	86'	15'	71'		CLW	✓	JP
6-74	JP	6-74	88'	10'	78'	00000066	26		JP
7-74	JP	7-74	85'	9'	76'		✓	✓	Bl
8-74	Bl	8-74	88'	10'	78'				Bl
9-74	Bl	9-74	91'	12'	79'				Bl
10-74	Bl	10-74	94'	12'	82'		✓	✓	Bl
11-74	Bl	11-74	90'	14'	76'				SS
12-74	Bl	12-74	93'	13'	80'				SS
1-75	Bl	1-75	100'	12'	88'		✓	✓	SS
2-75	Bl	2-75	95'	12'	83'				SS

WELL #4 CONT

650

DATE	STATIC	PUMPING LEVEL	DRAW DOWN	OIL CHANGE GAS MOTOR	MOTOR GREASED	ELEC. MOTOR GREASED	OPER. INST.	
3-75	80'	5'	-	N/A			M	
4-75	80'	10'	70'	↓	✓	✓	↓	
5-75	78'	15'	63'					
6-75	90'	14'	76'					
7-75	86'	13'	73'					
8-75	88'	11'	77'					
9-75	92'	39'	53'					
10-75	89'	35'	54'					
11-75	96'	12'	84'					
12-75	87'	17'	70'					
1-76	90'	11'	79'		✓	✓		✓
2-76	82'	14'	68'					
3-76	80'	14'	66'					
4-76	86'	19'	67'			✓		
5-76	92'	12'	80'					
6-76	94'	12'	84'	000000066		27	B.L.	
7-76	98'	14'	84'	—	✓	✓		
8-76	96'	17'	82'					
9-76	94'	18"	80'	—	—	—	J.P.	
10-76	96'	14'	82'					
11-76	96'	14'	82'					
12-76	98'	14'	84'					
1-77	100'	26'	74'	—	✓	✓	B.L.	
2-77	100'	16'	84'					
3-77	90'	16'	74'					
4-77	100'	14'	86'		✓	✓	B.L.	
5-77	97'	17'	84'					
6-77	94'	14'	80'					
7-77	100'	26'	74'		✓	✓		

WELL #5 - BLDG # 645

DATE	STATIC	PUMPING LEVEL	DRAW DOWN	OIL CHANGE GAS MOTOR	MOTOR GREASED	ELEC MOTOR GREASED	OPER. INET.
10-72	53'	18'	35'	✓	✓	✓	Bl
11-72	52	18	35				Bl
12-72	49	20'	29'				Bl
1-73	47'	20'	27'		✓	✓	Bl
2-73	47'	20'	27'				Bl
3-73	42'	19'	23'				Bl
4-73	41'	19'	22'	✓	✓	✓	Bl
5-73	45'	21'	24'				Bl
6-73	43'	20'	23'				Bl
7-73	50'	23'	27'		ELW	✓	Bl
8-73	44'	21'	23'	00000066	28		Bl
9-73	52'	20'	32'				Bl
10-73	53'	20'	33'	✓	✓	✓	Bl
11-73	51'	20'	31'				J.P.
12-73	50'	19'	31'				J.P.
1-74	53'	22'	31'		✓	✓	J.P.
2-74	54'	15'	39'				J.P.
3-74	51'	17'	44'				J.P.
4-74	50'	17'	43'	✓	✓	✓	J.P.
5-74	51'	15'	36'				J.P.
6-74	54'	14'	40'				J.P.
7-74	52'	19'	33'		✓	✓	Bl
8-74	50'	19'	31'				Bl
9-74	47'	20'	27'				Bl
10-74	46'	20'	26'	✓	✓	✓	Bl
11-74	48'	18'	30'				S.S.
12-74	51'	17'	34'				S.S.
1-75	50'	18'	32'		✓	✓	S.S.
2-75	54'	-	-				S.S.

Well #5 - CONT 645

DATE	STATIC	PUMPING LEVEL	DRAW DOWN	OIL CHANGED GAS MOTOR	MOTOR GREASED	ELEC MOTOR GREASED	REMARKS
3-75	52'	-	-				
4-75	54'	30'	24'	✓	✓	✓	
5-75	54'	30'	24'				
6-75	51'	30'	21'				
7-75	53'	26'	27'		✓	✓	
8-75	49'	17'	32'				
9-75	62'	29'	33'	000000	006629		
10-75	53'	18'	35'	✓	✓	✓	
11-75	53'	19'	34'				
12-75	54'	18'	36'				
1-76	50'	18'	32'	✓	✓	✓	
2-76	50'	21'	29'				
3-76	56'	21'	35'				
4-76	54'	17'	27'	✓	✓	✓	
5-76	56'	16'	40'				
6-76	52'	18'	34'				
7-76	53'	26'	27'	✓	✓	✓	Bu
8-76	52'	24'	28'				
9-76	52'	24'	28'	✓	✓	✓	J.P.
10-76	52'	20'	32'				
11-76	52'	24'	28'				
12-76	53'	20'	33'				
1-77	52'	18'	34'	✓	✓	✓	Bu
2-77	50'	26'	24'				
3-77	54'	24'	30'				
4-77	54'	20'	34'		✓	✓	Bu
5-77	52'	20'	32'				
6-77	54'	19'	27'				
7-77	53'	26'	27'	✓	✓	✓	

WELL # 6 - BLDG # 644

7

DATE	STATIC	PUMPING LEVEL	DRAW DOWN	OIL CHANGE GAS MOTOR	MOTOR GREASED	ELEC MOTOR GREASED	WATER	
10-72	78'	19'	59'	N/A	✓	✓	Bl	
11-72	79'	17'	62'	↓			Bl	
12-72	78'	19'	59'				Bl	
1-73	78'	19'	59'			✓	✓	Bl
2-73	77'	20'	57'					Bl
3-73	77'	20'	57'					Bl
4-73	75'	20'	55'			✓	✓	Bl
5-73	76'	22'	54'					Bl
6-73	76'	22'	54'					Bl
7-73	—	—	—			CLW	✓	Bl
8-73	70'	21'	49'		0000006630			Bl
9-73	78'	22'	56'					Bl
10-73	76'	22'	54'			✓	✓	Bl
11-73	77'	19'	58'					J.P.
12-73	77'	20'	57'					J.P.
1-74	79'	22'	57'			✓	✓	J.P.
2-74	78'	22'	56'					J.P.
3-74	79'	24'	55'					J.P.
4-74	80'	19'	61'			✓	✓	J.P.
5-74	78'	19'	59'					J.P.
6-74	76'	17'	59'					J.P.
7-74	76'	20'	56'		✓	✓	Bl	
8-74	79'	22'	57'				Bl	
9-74	82'	21'	61'				Bl	
10-74	81'	20'	61'		✓	✓	Bl	
11-74	80'	16'	64'				S.S.	
12-74	79'	19'	60'				S.S.	
1-75	68'	15'	43'		✓	✓	S.S.	
2-75	69'	30'	39'	✓			S.S.	

WELL # 6. CON'T

644

DATE	STATIC	PUMPING LEVEL	DRAW DOWN	OIL CHARGE MOTOR GAS MOTOR GREASED	ELEC MOTOR GREASED	DURATION
3-75	68'	28'	40'	NR		M
4-75	70'	32'	38'		✓	
5-75	68'	30'	38'			
6-75	68'	30'	38'			
7-75	74'	-	-		✓	
8-75	69'	22'	47'			
9-75	67'	24'	43'			
10-75	68'	20'	48'		OLW	
11-75	94'	18'	56'	00000051		
12-75	67'	20'	47'			
1-76	69'	21'	48'		✓	✓
2-76	66'	17'	49'			
3-76	71'	22'	49'			
4-76	70'	22'	48'		✓	✓
5-76	80'	22'	52'			
6-76	74'	18'	56'			Bl.
7-76	72	28	44		✓	✓
8-76	72	26	46		yes	yes
9-76	74	28	44			JR
10-76	72	16'	56			
11-76	74'	18	56'			
12-76	70	21	49			
1-77	66'	22	44'		✓	✓
2-77	57'	30	27			
3-77	72	26	46'			
4-77	68	20	48'		✓	✓
5-77	75	20'	55'			
6-77	75	20	55'			
7-77	72	16'	56		✓	✓

Well # 7- BLDG # ~~643~~ 643

DATE	STATIC	PUMPED LEVEL	DRAW DOWN	ALL CHANGE GAS MOTOR	MOTOR GREASED	ELC MOTOR GREASED	REMARKS
10-72	60'	23'	37'	✓	✓	✓	Bl
11-72	60'	22'	38'				Bl
12-72	60'	23'	37'				Bl
1-73	61'	21'	40'		✓	✓	Bl
2-73	62'	21'	41'				Bl
3-73	62'	22'	40'				Bl
4-73	59'	23'	36'	✓	CLW	✓	Bl
5-73	60'	20'	40'				Bl
6-73	60'	20'	40'	0000	0066	32	Bl
7-73	62'	27'	35'		✓	✓	Bl
8-73	60'	27'	33'				Bl
9-73	59'	26'	33'				Bl
10-73	58'	24'	34'	✓	✓	✓	Bl
11-73	60'	23'	37'				J.P.
12-73	61'	21'	40'				J.P.
1-74	64'	26'	40'		✓	✓	J.P.
2-74	63'	26'	37'				J.P.
3-74	—	21'	—				J.P.
4-74	62'	21'	41'	✓	✓	✓	J.P.
5-74	61'	28'	33'				J.P.
6-74	58'	27'	37'				J.P.
7-74	59'	24'	35'		✓	✓	Bl
8-74	57'	26'	31'				Bl
9-74	61'	25'	36'				Bl
10-74	61'	21'	40'	✓	✓	✓	Bl
11-74	60'	23'	37'				S.S.
12-74	64'	20'	44'				S.S.
1-75	68'	22'	46'		✓	✓	S.S.
2-75	68'	26'	42'				S.S.

WELL #7 - CONT 143

DATE	STATIC	PUMPING LEVEL	DRAW DOWN	OIL CHANGE GAS MOTOR	MOTOR GREASED	ELEC MOTOR GREASED	REMARKS
3-75	59'	28'	31'				
4-75	66'	26'	40'	✓	✓	✓	
5-75	62'	32'	30'				
6-75	68'	30'	38'				
7-75	64'	29'	35'		✓	✓	
8-75	60'	22'	38'				
9-75	50'	20'	30'				
10-75	62'	23'	39'	✓	✓	✓	
11-75	58'	25'	33'				
12-75	61'	21'	40'				
1-76	60'	24'	36'		✓	✓	↓
2-76	59'	24'	35'				
3-76	59'	22'	37'				
4-76	64'	27'	37'	✓	✓	✓	
5-76	65'	19'	46'				
6-76	60'	22'	38'	Yes			Bl
7-76	66'	26'	40'		✓	✓	
8-76	64	24	38				
9-76	62	25	38				J.P.
10-76	62	24	34		CLW		
11-76	64	27	37'	0000000000	0000000000	33	
12-76	62	26	36				
1-77	60	24'	36'	✓	✓	✓	Br
2-77	58	22	36				
3-77	60	24	36				
4-77	60'	22	38		✓	✓	Bl
5-77	60	22	38				
6-77	58'	22'	36'				
7-77	60'	22'	38'	✓	✓	✓	

To

PAGE

52

Well # 8 - Blog # 646

DATE	STATIC	PUMPING LEVEL	DRAW DOWN	OIL CHANGE GAS METER	MOTOR GREASAD	LINE MOTOR GREASAD	Notes
10-72	45'	23'	22'	✓	✓	✓	Bl
11-72	46'	23'	23'				Bl
12-72	46'	22'	24'				Bl
1-73	44'	21'	23'		✓	✓	Bl
2-73	43'	22'	21'				Bl
3-73	45'	21'	24'				Bl
4-73	45'	23'	22'	✓	✓	✓	Bl
5-73	48'	25'	43'				Bl
6-73	45'	23'	22'				Bl
7-73	45'	22'	23'			✓	Bl
8-73	44'	20'	24'				Bl
9-73	—	—	—				Bl
10-73	46'	30'	16'	✓	✓	✓	Bl
11-73	47'	26'	21'		CLW		J.P.
12-73	45'	23'	22'	0000	006634		J.P.
1-74	47'	36'	11'	•	✓	✓	J.P.
2-74	41'	28'	13'				J.P.
3-74	43'	24'	19'				J.P.
4-74	42'	20'	22'	✓	✓	✓	J.P.
5-74	45'	19'	26'				J.P.
6-74	41'	23'	18'				J.P.
7-74	40'	23'	17'		✓	✓	Bl
8-74	47'	22'	25'				Bl
9-74	46'	19'	27'				Bl
10-74	44'	21'	23'	✓	✓	✓	Bl
11-74	40'	21'	19'				S.S.
12-74	41'	23'	18'				S.S.
1-75	45'	20'	25'		✓	✓	S.S.
2-75	42'	21'	21'				S.S.

M.P.

Bl

J.P.

Bl

Bl

WELL #8 - CONT *WLB*

DATE	STATIC	PUMPING LEVEL	DRAW DOWN	OIL CHANGE GAS MOTOR	MOTOR GREASED	LEAK MOTOR GREASED	REMARKS
3-75	42'	21'	21'				
4-75	45'	20'	25'	✓	CLW	✓	
5-75	43'	18'	25'				
6-75	44'	16'	28'	0000	000000	35	
7-75	47'	14'	33'	✓	✓	✓	
8-75	49'	12'	37'				
9-75	47'	7'	40'				
10-75	43'	10'	33'		✓	✓	
11-75	46'	13'	33'				
12-75	41'	12'	29'				
1-76	44'	10'	34'	✓	✓	✓	✓
2-76	42'	16'	26'				
3-76	42'	17'	25'				
4-76	45'	14'	31'		✓	✓	
5-76	46'	18'	28'				
6-76	42'	18'	34'				Blk
7-76	45'	18'	27'	✓	✓	✓	
8-76	44'	18'	28'				
9-76	43'	18'	29'		yes	yes	Blk
10-76	42'	10'	32'				
11-76	45'	17'	18'				
12-76	42'	18'	24'		✓	✓	
1-77	45'	17'	18'	✓			
2-77	43'	21'	22'				
3-77	42'	17'	25'		✓	✓	Blk
4-77	44'	20'	24'				
5-77	49'	12'	37'				
6-77	44'	20'	24'				
7-77	43'	21'	22'	✓	✓	✓	

H. B. WELLS

#		BLOG.	#
# 1			647
# 2		"	648
# 3		"	649
# 4		"	650
# 5	266.000 g.p.d. 12-12-80"	"	645 645
# 6	259.000 g.p.d. 12-12-80"	"	644
# 7	283.000 g.p.d. 12-12-80"	"	643 643
# 8		"	646

SPIRACTORS STARTED WITH 120 cu. ft. SAND.
 FILTERS STARTED WITH 800 cu. ft. SAND EACH.

PAINT COLORS IN Bldg 670

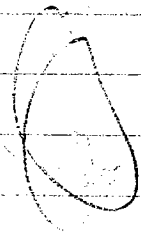
LIGHT BLUE PRESIOUS
 DARK BLUE ANTHEA

CLW
 000006636

H.B. Wells

<u>Well</u>	<u>Bldg #</u>	<u>HP - Elec Mtr</u>	<u>SERIAL #</u>
1	647	10 *	MFJ 1209355
2	648	20	NGJ 1222326
3	649	20	NGJ 1222325
4	650	40	LGJ 1110412
5	645	10 *	HGJ 804411
6	644	15	EFJ 520363
7	643	15 *	CGJ 310354
8	646	10 *	AHJ 112383

* Have gas meters



CLW

0000006637

LIME RECEIVED

0000006638

REC.	1 CAR LOAD	- 9-25-75	
REC.	1 CAR LOAD	- 3-18-76	
REC.	1 CAR LOAD	- 12-30-76	
REC.	1 TRUCK LOAD	= 8-5-78	39,200 lbs
REC.	1 TRUCK LOAD	- 7-17-79	40,400 LBS.
REC.	1 TRUCK LOAD	- 8-29-79	41,060 LBS.
REC.	1 TRUCK LOAD	9-6-79	44,100 LBS
REC.	1 TRUCK LOAD (CANNON)	10-22-79	40,490 LBS
REC.	1 TRUCK LOAD (CANNON)	10-26-79	40,040 LBS
REC.	1 TRUCK LOAD (CANNON)	3-19-80	46,160 lbs
REC.	1 TRUCK LOAD (Carter)	6-27-80	47,010 lbs
REC.	1 TRUCK LOAD (Carter)	7-28-80	44,500 lbs.
REC.	1 TRUCK LOAD (Carter)	8-25-80	40,480 lbs
REC.	1 TRUCK LOAD (Carter)	10-21-80	45,100 lbs
REC.	1 TRUCK LOAD (CANNON)	1-16-80	47,200 lbs
REC.	1 TRUCK LOAD (HAGAN)	1-27-81	45,000 LBS (NET)
REC.	1 TRUCK LOAD (CANNON)	3-13-81	46,500 lbs (NET)
REC.	1 TRUCK LOAD (Carter)	5-4-81	42,570 lbs
REC.	1 TRUCK LOAD (Morton)	5-14-81	44,320 (NET)
REC.	1 TRUCK LOAD (Carter)	7-24-81	47,620
REC.	1 TRUCK LOAD (Carter)	7-27-81	44,980
REC.	1 TRUCK LOAD (Carter)	7-27-81	45,640
REC.	1 TRUCK LOAD (Mike)	9-14-81	48,050
REC.	1/2 load in #1 FEEDER	11-24-81	24,025 (CANNON)
REC.	1 load #1 AND 2 LIME FEEDER	12-21-81	
REC.	1 TRUCK LOAD (Carter)	4-5-82	

LIME

REC. LIME 2 LOADS #1 HOPPER AND #2 3-3-82

Rec - 1 Truck load - May 3 '82 40,200 lb ^(net) JWC

Rec - 2 Truck loads - July 22 '82 81,340 lbs ^(net) JWC

REC. 1 TRUCK LOAD #2 HOPPER 34,450 lbs J.C.

Rec - 1 Truck load #1 hopper 9/23/82 JR

REC. ONE LOAD LIME BT 1730 OUT 1930 11-12-82 66000 lbs J.C.

Rec - 1 Truck load - Nov. 17 '82 29,070 ^(net) JWC

Rec - 1 " " Dec 13, '82 JWC

Rec 1 Truck load April 7, 83 34,000 E. Riggs

Rec 1 " " lime April 1, 83 ? D. Hill

Rec 1 " " lime May 11, 83 Emmons

Rec 1 " " lime May 12, 83 ~~Emmons~~

CLW

000006639

REPIRED FUEL PUMP ON #8 WELL 3-23-76 CANNON

CLW

0000006640

W/O

CLW

000006641

CLW

000006642

CLW

0000006643

HIGH SERVICE MOTOR + PUMP

^{OIL} CHANGED	GREASED	^{OIL} CHANGED	GREASED	^{OIL} CHANGED	GREASED
6-16-76	3-17-76				
—	6-16-76				
12-14-76	9-19-76				
	12-14-76				
6-23-77	3-9-77				
	6-8-77				
	9-12-77				
12-5-77	12-5-77				
	3-30-78				
6-14-78	6-14-78				
	9-10-78				
12-22-78	12-22-78				
	3-12-79				
6-10-79	6-10-79				
—	12-20-81				

CLW

0000006644

e
6
6

CLW

000006645

HIGH SERVICE MOTOR + PUMP

OIL CHANGED	GREASED	OIL CHANGED	GREASED	OIL CHANGED	GREASED
6-16-76	3-17-76				
—	6-16-76				
12-14-76	9-18-76				
—	12-14-76				
6-23-77	3-9-77				
—	6-8-77				
—	9-12-77				
12-5-77	12-5-77				
—	3-30-78				
6-14-78	6-14-78				
	9-10-78				
12-22-78	12-22-78				
	3-12-79				
6-10-79	6-16-79				
—	12-30-81				

CLW

0000006646

CLW

000006647

W P

8-26-2000

#3 ELECTRIC

18

HIGH SERVICE MOTOR + PUMP

^{oil} CHANGED	GREASED				
6-16-76	3-17-76				
—	6-16-76				
12-14-76	9-20-76				
—	12-14-76				
6-23-77	3-9-77				
—	6-8-77				
—	9-12-77				
12-5-77	12-5-77				
	3-30-78				
6-14-78	6-14-78				
	9-10-78				
12-22-78	12-22-78				
	3-12-79				
6-10-79	6-10-79				
—	12-20-81				

CLW

0000006648

CLW

000006649

HIGH SERVICE MOTOR + PUMP

^{OIL}
CHANGED GREASED

6-16-76 3-17-76

— 6-16-76

12-14-76 9-14-76

12-14-76

6-23-77 3-9-77

6-8-77

9-12-77

12-5-77 12-5-77

3-30-78

6-14-78 6-14-78

9-10-78

12-22-78 12-22-78

3-12-79

6-10-79 6-10-79

— 12-20-81

CLW

0000006650

0113 792

F
7

WJ
0000000000
CLW
0000006651

#1 GAS MOTOR - 6 CYLINDER

OIL + FILTER CHANGED	GREASED				
7-14-76	4-14-76				
—	7-14-76				
12-14-76	10-3-76				
	12-14-76				
6-23-77	3-9-77				
	6-8-77				
	9-12-77				
12-12-77	12-12-77				
	3-30-78				
	6-14-78				
	9-10-78				
12-22-78	12-22-78				
	3-2-79				
	6-16-79				
	9-18-79				
12-28-79	12-28-79				
	3-29-80				
5-12-82	Bldg. Wells. 646	15 gals			
5-12-82	S-671	53 gals			

CLW

0000006652

2121178

Fh
7

2000

CLW

0000006653

2 GAS MOTOR - 8 CYLINDER

OIL + FILTER CHANGED	GREASED
-------------------------	---------

7-14-76	4-14-76
---------	---------

—	7-14-76
---	---------

12-14-76	10-3-76
----------	---------

12-14-76	
----------	--

6-24-77	3-9-77
---------	--------

6-8-77	
--------	--

9-12-77	
---------	--

12-12-77	12-12-77
----------	----------

3-30-78	
---------	--

6-14-78	
---------	--

9-10-78	
---------	--

12-22-78	12-22-78
----------	----------

3-2-79	
--------	--

6-16-79	
---------	--

6-12-79	9-18-79
---------	---------

12-28-79	3-29-80
----------	---------

4-8-82	
--------	--

oil AND-FILTER

CLW

0000006654

CLW 5
000006653

CLW
000006653

GENERATOR

OIL + FILTER CHANGE	GREASED				
7-14-76	4-14-76				
—	7-14-76				
—	9-22-76				
12-14-76	12-14-76				
6-24-77	3-9-77				
	6-8-77				
	9-12-77				
12-12-77	Heavy equipment takes care of the generator. Checked with Mr. Froelle.				Heavy equipment

W.D.
CLW
 0000006654

CLW

000006655⁷

AIR COMPRESSOR

OIL CHANGED	GREASED				
7-14-76	4-14-76				
—	7-14-76				
12-15-76	10-3-76				
	12-15-76				
6-27-77	3-9-77				
	6-8-77				
	9-12-77				
12-12-77	12-12-77				
	3-30-78				
	6-20-79				
9-10-79	9-10-79				
	12-11-79				
	3-29-80				

CLW

0000006656

CLW

0000006659

#1 LIME PUMP

OIL CHANGED	GREASED
6-12-76	3-16-76
—	6-12-76
12-15-76	10-1-76
	12-15-76
Out of order	3-9-77
ORDER	6-8-77
	Out of order

CLW

0000006658⁶⁰

CLW

00000066⁶¹~~59~~

2 LIME PUMP

Get Changed	Ground
8-10-76	3-5-76
—	6-11-76
12-15-76	10-1-76
	12-15-76
6-27-77	3-9-77
	6-8-77
	9-12-77
12-12-77	12-12-77
	3-30-78
6-14-78	6-14-78
	9-9-78
12-11-78	12-11-78
	3-14-79
6-18-79	6-18-79
	9-15-79
12-28-79	3-28-80
	6-13-80
6-26-80	9-15-80
	12-11-80
12-15-80	3-25-81
7-12-81	9-3-81
12-16-81	12-3-81
	3-4-82
6-10-82	6-10-82
	9-6-82

CLW
0000006660

CLW

00000066613

3 LIME PUMP

OIL CHANGED	GREASED
----------------	---------

6-15-76	3-5-76
—	6-11-76
12-15-76	9-28-76
	12-15-76
6-27-77	3-9-77
	6-8-77
	9-12-77
12-12-77	12-12-77
	3-30-78
6-14-78	6-14-78
	9-9-78
12-11-78	12-11-78
	3-14-79
6-18-79	6-18-79
	9-15-79
12-28-79	3-28-80
	6-6-80
6-14-80	9-15-80
	12-11-80
12-15-80	3-25-81
7-12-81	9-3-81
12-16-81	12-3-81
	3-4-82
6-10-82	6-10-82
	9-6-82

CLW

0000006662⁴

CLW

0000066635

FLUORIDE PUMP & Chlorine Booster pump

OIL CHANGED	GREASED	OIL CHANGED	GREASED	OIL CHANGED	GREASED
6-15-76	3-5-76		3-12-82	Greased	
	6-11-76		6-30-82		
12-15-76	9-28-76		6-6-83	LEN	
	12-15-76		9-5-83	LEN	
6-27-77	3-9-77		12-5-83	LEN	
	6-8-77		3-6-84	LEN	
12-22-77	9-12-77		6-7-84	LEN	
	12-12-77		12-11-84	LEN	
6-14-78	3-30-78		6-6-85	LEN	
	6-14-78		Merry Christmas 12-25-85	LEN	
12-12-78	9-9-78		6-17-86	LEN	
	12-8-78		10-27-86	LEN	
6-28-79	3-14-79		6-5-87	LEN	
	6-18-79		11-28-87	LEN	
12-28-79	9-15-79		2-19-88	LEN	
	3-28-80		8-20-88	LEN	
6-14-80	6-6-80		4-8-89	LEN	
	9-15-80		8-1-89	ATK	
12-15-80	12-11-80		2-14-90	LEN	
	3-25-80		9-20-90	LEN	
6-15-81	6-25-80				
	8-25-80				
7-30-81	12-18-80				
WATER IN OIL	3-10-81				
	6-15-81				
	7-20-81				
	9-23-81				
	12-28-81				

CLW

000006666

6

CLW

00000666⁷5

CLW

0000006666

CLW

000000666900000

Gas Log.

10-17-78 - # 8 126 Gallons
 " " " - 671 - 225 Gallons
 " " " - # 1 - 125 Gallons
 12-5-78 - # 1 - 74 Gallons
 12-5-78 - # 3 - 99 Gallons
 6-15-79 - # 1 WELL & 671 PUMP STATION 250 Gallons
 8-30-79 - 215 GALS GAS HIGH LIFT PUMP STATION.
 8-30-79 - # 1-5-78 25 GALS IN EACH
 5-29-80 # 671 310 Gal
 5-29-80 # 1 153 Gal
 5-29-80 # 8 122 Gal

7-17-80 - 671 - 224
 well # 1 - 114
 " # 8 149
 # 5 31
 TOTAL 518 GALS.

10-23-80.
 671 - 191
 # 1 well - 149
 # 8 well - 146
 TOTAL 486 GALS

CLW
 00000066~~68~~⁷⁰

12-9-80
 671 - 159
 676 - 138 TOTAL 483 gals.
 647 - 78
 645 - 79
 643 - 34
 Mike

2-10-81	Bldg 671	77 Gal	Jmc
3-9-81	Bldg 671	35 Gal	Jmc
4-7-81	Bldg 671	42 Gal.	Jmc
4-30-81	Bldg 671	20 Gal.	Jmc
4-30-81	Bldg 646	40 Gal.	Jmc
4-30-81	Bldg 647	50 Gal.	Jmc
6-4-81	Bldg 647	15 GAL	ER
6-4-81	Bldg 646	15 GAL	ER
6-4-81	Bldg 671	36 GAL	ER
6-25-81	Bldg 671	37 GALS	J.C.
7-28-81	# 1 well	15 GAL	mjm
7-28-81	# 8 well	10 GAL	mjm
8-30-81	# 671	92 GAL	TR
8-19-81	# 671	15 GAL	REH
9-24-81	# 671	49 GALS	J.C.
9-24-81	# 1 WELL	15 GALS	J.C.
9-24-81	# 8 WELL	15 GALS	J.C.
11-3-81	Bldg 671	32 GALS	REH
11-3-81	well # 649	10 GALS	REH
12-17-81	Bld- 671 41"	44 GALS	J.C.
2-10-81	Bld 671	29 gal	JRA
2-10-81	Bld 646	15 gal	JRA
3-2-82	Bldg 671	23 gal. #1 well	15 gal 3/2
4-6-82	Bldg 671	-37 Gal, #5 well - 132 gal, #7 well - 106 gal.	Jmc
5-6-82	Bld- 646	15 GALS GAS CANNON	

5 WELL
7 WELL
did NOT
NEED GAS

CLW

71

00000666

m	7/8/82 -	D/dy. 671	76 gal.	m.j.m
m	7/8/82.	# 1 well	10 gal	m.j.m
m	7/8/82	# 8 well	12 gal	m.j.m
m	10/5/82	# 1 well	10 gal	AR
m	10/5/82	# 8 well	10 gal	AR

72
72

4

2.
m

CLW
0000006670²

WJ
00000000

CLW
00000667³

11/11
000000

CLW
000006672⁴

CLW 5
000006678

CLW
0000006674

W. J. ...
0000000000

CLW

000006675

1

CLW

000006678

8
=

CLW 9
000000667X

W 37
00000000

CLW
000006678⁸⁰

0000000000

CLW

0000006679

([#]dup)

CLW (#dup)
0000006680

CLW

000006681

CLW

000006682

0000000000

CLW

000006683

CLW
0000006684

CLW

0000006685

100 100 100 100

CLW
0000006686

CLW

000006687

00000000

0000006688

(46)

WELL # 1 BLDG. # 647

DATE	STATIC	PUMPING LEVEL	DRAW DOWN	OIL CHANGED GAS MOTOR	MOTOR GREASED	ELEC. MOTOR GREASED	OPER. UNIT
8-77	49'	28'	21'	—	—	—	Bl
9-77	46'	30'	16'	—	—	—	Bl
10-77	48'	30'	18'	—	YES	YES	Bl
11-77	46'	30'	16'	—	—	—	Bl
12-77	48'	30'	18'	—	—	—	Bl
1-78	49'	28'	19'	YES	YES	YES	Bl
2-78	47'	28'	19'	—	—	—	Bl
3-78	47'	28'	19'	—	—	—	Bl
4-78	47'	29'	18'	—	YES	YES	Bl
5-78	48	29	19'	—	—	—	Juc
6-78	46	26'	20	—	—	—	Juc
7-78	48	30'	18'	YES	YES	YES	Bl
8-78	47'	28'	19'	—	—	—	Bl
9-78	46'	30'	16'	—	—	—	Bl
10-78	48'	26'	22'	—	YES	YES	Bl
11-78	47'	28'	19'	—	—	—	Bl
12-78	47'	28'	18'	—	—	—	Bl
1-79	48	29	19'	YES	YES	YES	Bl
2-79	46	28	18'	—	—	—	Bl
3-79	47'	28'	19'	—	—	—	Juc
4-79	46	28	18	—	YES	YES	SS
5-79				—	—	—	SS
6-79	46'	28'	18'	—	—	—	SS
7-79				YES	YES	YES	SS
8-79		27'					Bl
9-79							Bl
10-79	46'	—	—	—	YES	yes	Bl
11-79	46'	28'		—	—	—	Bl
12-79	48	26'	22'	Oil + Fuel changed	—	—	Bl

WELL # 1 Bldg. # 647

DATE	STATIC	PUMPING LEVEL	DRAW DOWN	OIL CHANGED GAS MOTOR	MOTOR GREASED	ELEC. MOTOR GREASED	OPER. UNIT	
1-80	46'	27'	19'	-	-	-	Jm	
2-80	46	24'	22'				SS	
3-80	46'	24	22'		✓	—	SS	
4-80	32'	17'	15'				SS	
5-80	35	20	15'				J.C.	
6-80			15'				Qu	
7-80	32'	17'	15'				SH	
8-80	32'	17	15				J.C.	
9-80	32'	17'	15		✓		SH	
10-80	32		15'				SH	
11-80	32'		15				SH	
12-80	35	20	15					
1-81	32		15				SH	
2-81	35		15	YES			SH	
3-81								
4-81	32	17	15'				SH	
5-81	32	17	15'				SH	
6-81	32	17	15'				J.C.	
7-81	31	39	-8	-	-	Yes	TR	
8-81	31	38	-7		Yes	-	TR	
9-81	32	39	-7	-	-	-	TR	
10-81	28 ^{Pulled} 10-26-81	32	-4	-	-	Yes	TR	
11-81	Well Pulled	-	-	-	-	-	TR	
12-81	" "	-	-	-	Yes	-	TR	
1-82	" "	-	-	-	-	-	TR	
2-82	" "	-	-	-	-	-	TR	
3-82	37	Well in but NOT wired or connected						TR
4-82	35	56	21		Yes	Yes	TR	

40

Air Line Length: 70 Ft

Well #1 Bldg 647

DATE	STATIC	Pumping Level	Draw Down	MOTOR GREASED	Operator INT	Remarks
5-82	38	55	17		TR	
6-82	38	53	15	-Yes-	TR	Greased Universals and Transmission
7-82	39	54	15		TR	
8-82	38	53	15 15		TR	
9-82	39	52	13 13	-Yes-	TR	
10-82	38	52	14		TR	
11-82	38	55	17		TR	
12-82						
1-83						
2-83						
3-83						
4-83						
5-83						
6-83						
7-83						
8-83						
9-83						
10-83						
11-83						
12-83						
1-84						
2-84						
3-84						
4-84						
5-84						
6-84						
7-84						
8-84						

CLW

0000006690

STAMPED MARCH 1951

1
2
3
4
5
6
7
8
9
10
11
12
13
14
15
16
17
18
19
20
21
22
23
24
25
26
27
28
29
30
31
32
33
34
35
36
37
38
39
40
41
42
43
44
45
46
47
48
49
50

CLW

000006691

0000006692

(42)

WELL # 2 BLDG # 648

DATE	STATIC	PUMPING LEVEL	DRAW DOWN	MOTOR GREASED	E.A.E. MOTOR GREASED	OPER. INIT.
8-77	98'	22'	76'	—	—	Blm
9-77	98'	20	78'	—	—	Blm
10-77	90'	24'	66'	—	YES	Blm
11-77	98'	20'	78'	—	—	Blm
12-77	98'	22'	76'	—	—	Blm
1-78	98'	22'	74'	—	YES	Blm
2-78	98'	20'	78'	—	—	Blm
3-78	100 ⁺	20'	80'	—	—	Blm
4-78	100	20'	80'	—	YES	Blm
5-78	96'	18'	78'	—	—	Jm
6-78	98'	22'	76'	—	—	Jm
7-78	98'	22'	76'	—	YES	Blm
8-78	96'	19'	77'	—	—	Blm
9-78	98'	15'	83'	—	—	Blm
10-78	98'	22'	76'	—	YES	Blm
11-78	100	24'	76'	—	—	Blm
12-78	98	22	76'	—	—	Blm
1-79	98	18	80	—	YES	Blm
2-79	98	18	80	—	—	Blm
3-79	100	20'	80'	—	—	Jm
4-79	98	18	80	—	YES	J.C.
5-79	100	20	80	—	—	S.S.
6-79	96	19	77	—	—	J.C.
7-79	98	18	80	—	YES	J.C.
8-79	100	24	76	—	—	J.C.
9-79	98	18	80	—	—	J.C.
10-79	98	22	76	—	YES	J.C.
11-79	98'	20'	78'	—	—	Blm
12-79	98'	22	76'	—	—	Blm

0-18-80
 45 P.S. 11

CLW

000006693

Well # 2 Bldg # 648

DATE	STATIC	PUMPING LEVEL	DRAW DOWN	MOTOR GREASED		OPER. INIT.
1-80	100'	24'	76'	OUT		JM
2-80	90'	24'	66'	✓		J.F.
3-80	96'	19'	77'	✓		J.F.
4-80	will not Pump		up	YES		BM
5-80	"	"	"			J.F.
6-80	"	"	"	-		JM
7-80	"	"	"	YES		J.C.
8-80	"	"	"			J.C.
9-80	"	"	"			J.C.
10-80	"	"	"	YES		J.C.
11-80	"	"	"			J.C.
12-80	"	"	"	BEARING BAND Etc MOTOR		J.C.
1-81	"	"	"	YES	_____	J.C.
2-81	"	"	"	(OUT)	_____	J.S.
3-81	"	"	"		_____	J.C.
4-81	"	"	"		_____	J.C.
5-81	"	"	"		_____	J.S.
6-81	"	"	"		_____	J.C.
7-81	"	"	"		_____	J.C.
8-81	"	"	"	YES	_____	J.F.
9-81	"	"	"			J.F.
10-81	90'	15'	75'			J.C.
11-81	90'	20'	70'	YES		J.C.
12-81	95'	11'	84'			J.C.
1-82	94'	12'	82'			J.C.
2-82	90'	15'	75'	YES		J.C.
3-82	83'	15'	68'			J.C.
4-82	81'	19'	62'			J.C.

AIR LINE 100'

PER MIT	DATE	STATIC	PUMPING LEVEL	DRAIN DOWN	MOTOR GREASED			INIT.
J.M.	5-82	18'	82'	64'	YES			J.C.
J.F.	6-82	18'	82'	64'				J.C.
J.F.	7-82	16'	81'	65'				J.F.
J.M.	8-82	15'	81'	66'	YES			J.F.
J.C.	9-82	7'	71'	65'				J.F.
J.M.	10-82	8'	72'	64'				J.F.
J.C.	11-82	7'	71'	65'	YES			J.C.
J.C.	12-82							
J.C.	1-83							
J.F.	2-83							
J.F.	3-83							
J.C.	4-83							
J.C.	5-83							
J.S.	6-83							
J.C.	7-83							
J.C.	8-83							
J.S.	9-83							
J.C.	10-83							
J.C.	11-83							
J.A.	12-83							
J.F.	1-84							
J.C.	2-84							
J.C.	3-84							
J.C.	4-84							
J.C.	5-84							
J.C.	6-84							
J.C.	7-84							
J.C.	8-84							

CLW

0000006694

WELL #2 BEHC. # 648

DATE	STATIC	PUMPING LEVEL	DROWN DOWN	MOTOR GREASED
9-84				
10-84				
11-84				
12-84				
1-85				
2-85				
3-85				
4-85				
5-85				
6-85				
7-85				
8-85				
9-85				
10-85				
11-85				
12-85				
1-86				
2-86				
3-86				
4-86				
5-86				
6-86				
7-86				
8-86				
9-86				
10-86				
11-86				
12-86				

CLW

000006695

CLW

(44)

0000006696

WELL # 3 BLDG # 649

DATE	STATIC	PUMPING LEVEL	DRAW DOWN	MOTOR GREASED		OPER. INIT.
8-77	90'	20'	70'	—	—	Blm
9-77	90'	21'	69'	—	—	Blm
10-77	96'	22'	74'	YES	—	Blm
11-77	86'	20'	66	—	—	Blm
12-77	92	27'	69'	—	—	Blm
1-78	96'	—	—	YES	—	Blm
2-78	94'	—	—	—	—	Blm
3-78	96'	—	—	—	—	Blm
4-78	95'	—	—	YES	—	Blm
5-78	94'	20'	74'	—	—	Jen
6-78	90'	22'	68'	—	—	Jen
7-78	92'	22'	70'	YES	—	Blm
8-78	92'	20'	72'	—	—	Blm
9-78	94'	20'	74'	—	—	Blm
10-78	96'	24'	72'	YES	—	Blm
11-78	96'	—	—	—	—	Blm
12-78	96'	18	78	—	—	Blm
1-79	94	16	78'	YES	—	Blm
2-79	96	17	79	—	—	Blm
3-79	98	18	80	—	—	Jen
4-79	92	20	72	YES	—	JL
5-79	95	20	75	—	—	Blm
6-79	92	20"	72	—	—	Blm
7-79				YES	—	Blm
8-79		18'		—	—	Blm
9-79				—	—	
10-79	96'	—	—	YES	—	Blm
11-79	96'	22'	74'	—	—	Blm
12-79		22	74'	—	—	Blm

WELL #3 BLDG # 649

DATE	STATIC	PUMPING LEVEL	DRAW DOWN	MOTOR GREASED	OPER INIT
1-80	90'	22	68'	✓	Jun
2-80	92'	22	70	—	Jun
3-80	92	22	70'	✓	Ben
4-80	92	18'	72'	—	Ben
5-80	90'	22	68'	—	J.C.
6-80		18'		—	Jun
7-80					
8-80	92'	24"	68'	✓	J.C.
9-80	91'	22'	66'	✓	Mjr
10-80	90'	20'	70'	✓	Mjr
11-80	90	22'	68'	✓	Mjr
12-80	92'	24'	68'		
1-81	90	22'	68'		Jun
2-81	—————				
3-81					
4-81					
5-81					
6-81					
7-81					
8-81					
9-81					
10-81					
11-81	94'	20'	74'		
12-81	17.6	90.0			Mjr
1-82	18'	88			Mjr

CLW

0000006697

ER
17

m

m

m

m

m

m

m

m

m

m

m

m

CLW

000006698

0000000000

CLW

0000006699

0000006700

WELL # 4 BLDG # 650

DATE	STATIC	PUMPING LEVEL	DRAW DOWN	MOTOR GREASED		OPER. INIT.	
8-77	86'	15'	71'	—	—	Blm	—
9-77	96'	14'	82'	—	—	Blm	—
10-77	98'	12'	86'	YES	—	Blm	—
11-77	98'	14'	84'	—	—	Blm	—
12-77	98'	14'	84'	—	—	Blm	—
1-78	98'	14'	84'	YES	—	Blm	—
2-78	98'	12'	86'	—	—	Blm	—
3-78	98'	33'	65'	—	—	Blm	—
4-78	98'	33'	65'	YES	—	Blm	—
5-78	96'	28'	68'	—	—	Jrc	—
6-78	94'	16'	78'	—	—	Jrc	—
7-78	88'	14'	74'	YES	—	Blm	—
8-78	92'	16'	76'	—	—	Blm	—
9-78	94'	32'	62'	—	—	Blm	—
10-78	96'	30'	66'	YES	—	Blm	—
11-78	94'	36'	58'	—	—	Blm	—
12-78	98'	30'	68'	—	—	Blm	—
1-79	94'	36'	58'	YES	—	Blm	—
2-79	95'	35'	60'	—	—	Blm	—
3-79	96'	36'	60'	—	—	Jrc	—
4-79	98'	28'	70'	YES	—	J.C.	—
5-79	100'	30'	70'	—	—	Blm	—
6-79	92'	36'	60'	—	—	J.C.	—
7-79	95'	30'	65'	YES	—	J.C.	—
8-79	98'	32'	62'	—	—	J.C.	—
9-79				—	—		—
10-79	100+	32'	68'	YES	—	Blm	—
11-79	100+	30'	70'	—	—	Blm	—
12-79	100+	30'	70'	—	—	Blm	—

WELL # 4 BLDG # 650

DATE	STATIC	PUMPING LEVEL	DRAW DOWN	MOTOR GREASED	OPER. INIT.
1-80	100'	32'	74'	YES	Jm
2-80	100'	30'	78'		Ben
3-80	100'	34'	78'		Ben
4-80	100'	34'	76'	YES	Ben
5-80	100'	32'	68'		JL
6-80	100'	34'	66'		JL
7-80	99'	29'	70'	YES	JL
8-80	100'	32'	68'		JL
9-80	100'	31'	69'		JL
10-80	100'	30'	70'	YES	JL
11-80	90'	72'	78'		mjm
12-80	99'	29'	70'		
1-81	100'	28'	72'		Jm
2-81					
3-81					
4-81					
5-81					
6-81	100	28"	72'		
7-81					
8-81					
9-81					
11-81	50'				
12-81	12'	87.0			
1-82	8'	88'			mjm
2-82					mjm
3-82					
4-82					
5-82					
6-82					

CLW

0000006701

110° air in 25 ang

47

40 lb of Pressure

WELL #4

BLDG #650

1951 55

DATE	STATIC	PUMPING LEVEL	DRAW DOWN	MOTOR GREASED	OPER. INT.
------	--------	---------------	-----------	---------------	------------

7-82

19' Direct Reading
14' Altitude - 80'

-66'

8-82

CLW

0000006702

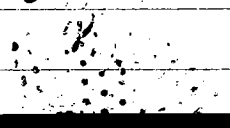
00000

Faint header text at the top of the page, possibly including a title or document type, which is largely illegible due to blurring.

- D
- 8
- 9
- 10
- 11
- 12
- 1
- 2
- 3
- 4
- 5
- 6
- 7
- 8
- 9
- 10
- 11
- 12

CLW

000006703



0000006704

(48)

WELL # 5 BLDG # 645

DATE	STATIC	PUMPING LEVEL	DRAW DOWN	OIL CHANGED GAS MOTOR	MOTOR GREASED	ELEC. MOTOR GREASED	OPER INIT.
8-77	43'	20'	23'	—	—	—	Bl
9-77	56'	26'	30'	—	—	—	Bl
10-77	54'	25'	29'	—	YES	YES	Bl
11-77	54'	26'	28'	—	—	—	Bl
12-77	54'	24'	28'	—	—	—	Bl
1-78	52'	26'	24'	YES	YES	YES	
2-78	53'	26'	24'	—	—	—	Bl
3-78	51'	24'	25'	—	—	—	Bl
4-78	52'	24'	28'	—	YES	YES	Bl
5-78	52'	22'	30'	—	—	—	Bl
6-78	54'	26'	28'	—	—	—	Bl
7-78	52'	24'	28'	YES	YES	YES	Bl
8-78	50'	22'	28'	—	—	—	Bl
9-78	52'	26'	26'	—	—	—	Bl
10-78	54'	25'	29'	—	YES	YES	Bl
11-78	51'	26'	25'	—	—	—	Bl
12-78	51'	25'	28'	—	—	—	Bl
1-79	52'	24'	24'	YES	YES	YES	Bl
2-79	53'	26'	27'	—	—	—	Bl
3-79	52'	26'	26'	—	—	—	Bl
4-79	53'	26'	27'	—	YES	—	Bl
5-79	54'	26'	28'	—	—	—	Bl
6-79	—	26'	—	—	—	—	Bl
7-79	—	—	—	YES	YES	—	Bl
8-79	—	26'	—	—	—	—	Bl
9-79	—	—	—	—	—	—	Bl
10-79	54'	25'	29'	—	YES	YES	Bl
11-79	—	26'	26'	—	—	—	Bl
12-79	—	—	26'	—	—	—	Bl

6-18-80
pressure #30

CLW

0000006705

airline 70'

WELL #5 BLDG # 645

DATE	STATIC	PUMPING LEVEL	DRAW DOWN	OIL CHANGED GAS MOTOR	MOTOR GREASED	ELEC-MOTOR GREASED	OPER INIT	DI
1-80	54'	28'	26'	yes	yes	yes	Jim	5
2-80	54'	26'	28	-	-	-	Jim	6
3-80	52'	24'	28	-	-	-	Jim	7
4-80	56'	30'	26	-	-	-	Jim	8
5-80	54	22"	32"	yes	yes	yes	J.C.	9
6-80		26'		-	-	-	Jim	10
7-80	56	28'	28'	-	-	-	Jim	11
8-80	56'	30'	26'	-	-	-	J.C.	1
9-80	54	28	26'	yes	yes	yes	Jim	1
10-80	56	24	32'	-	-	-	Jim	2
11-80	54'	22"	32'	-	-	-	Jim	3
12-80	56	24'	32"	266,000 g.p.d.	-	-	Jim	4
1-81	55'	27'	28'	yes	yes	yes	Jim	5
2-81	49'	-	-	-	-	-	Jim	6
3-81	56'	28'	28'	-	-	-	Jim	7
4-81	-	-	26'	-	yes	yes	Jim	8
5-81				-	-	-		
6-81	56'	28'	28'	-	-	-	J.C.	1
7-81				-	-	-		
8-81	46'	-	-	-	yes	yes	Jim	1
9-81	52	26'	26'	-	-	-	Jim	2
10-81	50'	28'	26	-	-	-	Jim	3
11-81	56'	28'	28'	-	yes	yes	Jim	4
12-81			28'	-	-	-	Jim	5
1-82		26'	-	-	-	-	Jim	6
2-82	47'	25'	22	-	yes	yes	Jim	7
3-82	48' → 22'	48'	26'	-	-	-	Jim	8
4-82	22'	47	25'	-	-	-	Jim	9

30 ps.

Well # 5

Bldg. # 645

Airline

70'

(49)

ER IT	DATE	STATIC	Pumping Level	Draw Down	Oil-changed Gas Motor	Motor Greased	Elec. motor Greased	OPER. Init.
✓	5-82	18'	44'	26'	—	yes	yes	JWC
✓	6-82	—	45'	—	—	—	—	JWC
✓	7-82	—	45'	—	—	—	—	JWC
✓	8-82	^{off 10 min} 30'	44'	14'	—	yes	yes	JWC
✓	9-82	28'	46'	18'	—	—	—	JWC
✓	10-82	27'	44'	17'	—	—	—	JWC
✓	11-82	27'	45'	18'	—	yes	yes	JWC
✓	12-82							
✓	1-83							
✓	2-83							
✓	3-83							
✓	4-83							
✓	5-83							
✓	6-83							
✓	7-83							
✓	8-83							
✓	9-83							
✓	10-83							
✓	11-83							
✓	12-83							
✓								
✓								
✓								
✓								
✓								

OLW

0000006706

0000000000

CLW
0000006707

WELL # 6 BLDG # 644

DATE	STATIC	PUMPING LEVEL	DRAW DOWN	MOTOR GREASED		OPER. INIT.	
8-77	68'	20'	48'	—	—	Blm	—
9-77	68'	18'	50'	—	—	Blm	—
10-77	66'	16'	50'	YES	—	Blm	—
11-77	68'	18'	50'	—	—	Blm	—
12-77	68'	26'	42'	—	—	Blm	—
1-78	68	26	42	YES	—	Blm	—
2-78	70'	25'	45'	—	—	Blm	—
3-78	72	25'	47'	—	—	Blm	—
4-78	70	25'	45'	YES	—	Blm	—
5-78	68'	21'	47'	—	—	Jm	—
6-78	70'	26'	44	—	—	Jm	—
7-78	68'	20'	48'	YES	—	Blm	—
8-78	70'	25'	45'	—	—	Blm	—
9-78	68'	22'	46'	—	—	Blm	—
10-78	68'	25'	43'	YES	—	Blm	—
11-78	68'	22	46''	—	—	Blm	—
12-78	66	25	44'	—	—	Blm	—
1-79	68'	20	48	YES	—	Blm	—
2-79	66	22	44	—	—	Blm	—
3-79	66'	26'	40'	—	—	Jm	—
4-79	66	22	44	YES	—	Blm	—
5-79	65	29	36	—	—	Blm	—
6-79		22'		—	—	Blm	—
7-79				—	—		—
8-79		24'		—	—	Blm	—
9-79				—	—		—
10-79	68'	20'	48'	YES	—	Blm	—
11-79	69'	24'	45'			Blm	—
12-79	68'	20'	48'	out + filtered	—	Jm	—

Pressure 6-18-80 #29

Length of Airline 90'

WELL # 6 BLDG # 644

DATE	STATIC	PUMPING LEVEL	DRAW DOWN	MOTOR GREASED		OPER INIT
1-80	68	20'	48'	yes	-	yes
2-80	68	24	44'	-		yes
3-80	66'	22'	44'	yes		yes
4-80	72	28'	44'	-		yes
5-80	68'	22'	46	-		yes
6-80	69'	23'	46'	-		yes
7-80	69'	24'	45'	yes		yes
8-80	66'	23'	43'	-		J.C.
9-80	68'	25'	43'	-		yes
10-80	68	24	44'	yes		yes
11-80	72'	28'	44'	-		yes
12-80	66'	23'	43'	-	259,000 g.p.d 12-12-80	yes
1-81	68'	24'	44'	yes		yes
2-81	72'	26	46'	-		yes
3-81	68'	-	-	-		yes
4-81	-	-	42'	yes		yes
5-81						
6-81	66'	23'	43'			J.C.
7-81		20'				
8-81	67'	24'	43	yes		yes
9-81	67'	23'	44'	-		yes
10-81	68'	24'	44'	-		yes
11-81	66'	23'	43'	yes		yes
12-81	68'	25	43'	-		yes
1-82	68'	20'	48'	-		yes
2-82	65'	21'	44	yes		yes
3-82	erect Red 22" Gauge	70'	48'	-		yes
4-82	22'	70	48'	-		yes

CLW

0000006709

AIRLINE

90'

Well # 6 Bldg # 644

(51)

DATE	STATIC	Pumping Level	Draw Down	Motor Greased	OPER. Init.
5-82	21'	70'	49'	yes	ju
6-82	—	68'	—	—	ju
7-82	—	70'	—	—	ju
8-82	31' <small>off 1 hour</small>	69'	38	yes	ju
9-82	30'	70'	40'	—	ju
10-82	26'	72'	46'	—	ju
11-82	27'	72'	45'	yes	ju
12-82					
1-83					
2-83					
3-83					
4-83					
5-83					
6-83					
7-83					
8-83					
9-83					
10-83					
11-83					
12-83					

CLW

0000006710

P.
DA
1-
2-
3-
4-
5-
6-
7-
8-
9-
10-
11-
12-
1-
2-
3-
4-
5-
6-
7-
8-
9-
10-
11-
12-
1-
2-
3-
4-
5-
6-
7-
8-
9-
10-
11-
12-
1-
2-
3-
4-
5-
6-
7-
8-
9-
10-
11-
12-

CLW
000006711

0000006712

(52)

WELL # 7 BLDG # 643

DATE	STATIC	PUMPING LEVEL	DRAW DOWN	OIL CHANGE GAS MOTOR	MOTOR GREASED	ELEC. MOTOR GREASED	REMARKS
8-77	56'	18'	38'	—	—	—	Bl
9-77	57'	14'	41'	—	—	—	Bl
10-77	56'	20'	36'	—	YES	YES	Bl
11-77	54'	16'	38'	—	—	—	Bl
12-77	54'	16'	38'	—	—	—	Bl
1-78	56'	20'	36'	YES	YES	YES	Bl
2-78	58'	24'	34'	—	—	—	Bl
3-78	56'	21'	35'	—	—	—	Bl
4-78	56'	24'	32'	—	YES	YES	Bl
5-78	56'	20'	36'	—	—	—	Bl
6-78	58'	24'	34'	—	—	—	Bl
7-78	58'	22'	36'	YES	YES	YES	Bl
8-78	56'	20'	36'	—	—	—	Bl
9-78	57'	22'	35'	—	—	—	Bl
10-78	58'	18'	40'	—	YES	YES	Bl
11-78	56'	26'	30'	—	—	—	Bl
12-78	54'	26'	28'	—	—	—	Bl
1-79	56'	22'	34'	OIL FILTER YES	YES	YES	Bl
2-79	56'	22'	34'	—	—	—	Bl
3-79	56'	18'	38'	—	—	—	Bl
4-79	79'	19'	60'	—	YES	YES	JC
5-79	58'	26'	32'	—	—	—	Bl
6-79	53'	18'	35'	—	—	—	JC
7-79	60'	20'	40'	YES	YES	YES	JC
8-79	58'	22'	36'	—	—	—	JC
9-79	56'	26'	30'	—	—	—	JC
10-79	58'	22'	36'	—	YES	YES	JC
11-79	56'	—	—	—	—	—	Bl
12-79	56'	—	—	—	—	—	Bl

6-18-80
present

0000006713

WELL # 7 Bldg # 643

DON'T GREASE

DATE	STATIC	PUMPING LEVEL	DRAW DOWN	OIL CHANGE GAS MOTOR	MOTOR GREASED	ELEC MOTOR GREASED	OPER. INIT
1-80	58'	20'	38'	-	-	-	JC
2-80	58'	18'	40'	YES	YES	YES	J.C.
3-80	58'	20'	38'	-	-	-	J.C.
4-80	58'	28'	30'	-	-	-	J.C.
5-80	58'	20'	38'	-	YES	YES	J.C.
6-80	60'	32'	28'	-	-	-	J.C.
7-80	62'	26'	36'	-	-	DON'T	J.C.
8-80	58'	18'	40'	YES	YES	(NO)	J.C.
9-80	59'	19'	31'	DIA. FILTER	-	(GREASE CANNON)	J.C.
10-80	61'	24'	36'	-	-		J.C.
11-80	58'	20'	38'	-	YES		J.C.
12-80	60'	32'	28'	253,000 g.p.d. 12-12-80	-		J.C.
1-81	58'	21'	37'	-	-		J.C.
2-81	62'	24'	36'	YES	YES		J.C.
3-81	58'	28'	30'	-	-		J.C.
4-81	58'	30'	28'	-	-		J.C.
5-81	62'	26'	36'	-	-		J.C.
6-81	58'	28'	30'	-	YES		J.C.
7-81	58'	21'	37'	-	-		J.C.
8-81	62'	26'	36'	YES	-	J.C.	
9-81	61'	24'	37'	-	YES	J.C.	
10-81	60'	32'	28'	-	-	J.C.	
11-81	58'	20'	38'	-	-	J.C.	
12-81	60'	33'	27'	-	YES	J.C.	
1-82	58'	28'	30'	-	-	J.C.	
2-82	55'	17'	38'	-	-	J.C.	
3-82	58'	28'	30'	-	YES	YES	J.C.
4-82	60'	33'	27'	-	-	YES	J.C.

AIR LINE 78'

DATE	STATIC	PUMPING LEVEL	DRAWN DOWN	OIL CHANGE GAS MOTOR	MOTOR GREASED	ELEC. MOTOR GREASED	OPER. INIT.
5-82	32'	61'	29'				J.C.
6-82	30'	58'	28'		YES	YES	J.C.
7-82	34'	60'	26'				J.C.
8-82	32'	61'	29'				J.C.
9-82	32'	61'	29'		YES	YES	J.C.
10-82	32'	62'	30'				J.C.
11-82	32'	61'	29'				J.C.
12-82							
1-83							
2-83							
3-83							
4-83							
5-83							
6-83							
7-83							
8-83							
9-83							
10-83							
11-83							
12-83							
1-84							
2-84							
3-84							
4-84							
5-84							
6-84							
7-84							
8-84							

CLW

0000006714

30000000

WELL # 2 - Bld - # 243

DATE STATIC PUMPING DROWN OIL MOTOR ELEC. MOTOR OPER.
LEVEL DOWN Changed GREASED GREASED INIT.

9-84
10-84
11-84
12-84
1-85
2-85
3-85
4-85
5-85
6-85
7-85
8-85
9-85
10-85
11-85
12-85
1-86
2-86
3-86
4-86
5-86
6-86
7-86
8-86
9-86
10-86
11-86
12-86

CLW

0000006715

6-18-80 pressure #25

0000006716

54

WELL # 8 BLDG # 646

EA. T.	DATE	STATIC	PUMPING LEVEL	DRAW DOWN	OIL CHANGE GAS MOTOR	MOTOR GREASED	ELEC. MOTOR GREASED	OPER. INIT.
	8-77	46'	34'	12'	—	—	—	Bl
	9-77	46'	34'	12'	—	—	—	Bl
	10-77	47'	32'	15'	—	YES	YES	Bl
	11-77	46'	32'	14'	—	—	—	Bl
	12-77	45'	32'	13'	—	—	—	Bl
	1-78	46'	32'	14'	YES	YES	YES	Bl
	2-78	47'	32'	15'	—	—	—	Bl
	3-78	46'	30'	16'	—	—	—	Bl
	4-78	45'	32'	13'	—	YES	YES	Bl
	5-78	46'	34'	12'	—	—	—	Jm
	6-78	46'	32'	14'	—	—	—	Jm
	7-78	46'	30'	16'	YES	YES	YES	Blm
	8-78		PULLED		—	—	—	Blm
	9-78	47'			—	—	—	Blm
	10-78				—	YES	YES	Jm
	11-78				—	—	—	Jm
	12-78	—	—	—	—	—	—	Blm
	1-79				YES	YES	YES	Bl
	2-79	OOT	OOT		—	—	—	SS
	3-79	"	"		—	—	—	Jm
	4-79	"	"		—	—	—	SS
	5-79	OOT	OOT	—	—	—	—	SS
	6-79				—	—	—	SS
	7-79				YES	—	—	Bl
	8-79				—	—	—	SS
	9-79				—	—	—	SS
	10-79	48'	34'	14'	—	yes	yes	SS
	11-79	48'	—	—	oil	—	—	SS
	12-79	47'	—	—	filter	—	—	SS

WELL # 8 Bldg # 646

DATE	STATIC	PUMPING LEVEL	DRAW DOWN	OIL CHANGE HAS MOTOR	MOTOR GREASED	ELEC. MOTOR GREASED	OPER INIT
1-80	48'						JS
2-80	46'						SS
3-80	48'						SS
4-80			14'				SS
5-80	48'	56'	8'		YES		JS
6-80	48'						JS
7-80	48'						JS
8-80	48'	56'	1'				JS
9-80	48'						JS
10-80	48'						JS
11-80	48'						JS
12-80	48'	56'	8'				JS
1-81	48'		8'				JS
2-81	48'		8'	YES			JS
3-81							
4-81	48'	56'	8'				JS
5-81	46'						JS
6-81	46'	50'	8'				JS
7-81	Air Line Plugged		-	-	-	-	TR
8-81	Well Pulled		-	-	Yes	-	TR
9-81	"	"	-	-	-	-	TR
10-81	"	"	-	-	-	-	TR
11-81	Well	PULLED	-	-	Yes	-	TR
12-81	"	"	-	-	-	-	TR
1-82	Well back in	Jan 28					TR
2-82	36'	48'	12'		Yes		TR
3-82	34'	48'	14'				TR
4-82	33	48'	15'				TR

CLW
0000006717

Air Line Length: 70ft

Well #8

Bldg 646

Date	Static	Pumping level	DRAW DOWN	MOTOR GREASED	OPER INT.	REMARKS!
5-82	34	47	13		R	
6-82	35	49	14	-Yes-	YR	Greased universal joints and transmission
7-82	35	48	13		YR	
8-82	36	50	14		R	
9-82	36	49	13	-Yes-	R	
10-82	35	47	12		YR	
11-82	36	49	13		JEDA	
12-82						
1-83						
2-83						
3-83						
4-83						
5-83						
6-83						
7-83						
8-83						
9-83						
10-83						
11-83						
12-83						
1-84						
2-84						
3-84						
4-84						
5-84						
6-84						
7-84						
8-84						

CLW
0000006718

CLW

0000006719

CLW

000006720

DR

MID

CLW

057 80 510 000

000006721

CLW
000006723

CLW

000006724

CLW

000006725

10/10/2000

CLW
000006726

0000000000

CLW
0000006727

AIR Line Length
70'

WELL # 8

Bldg 646

Date

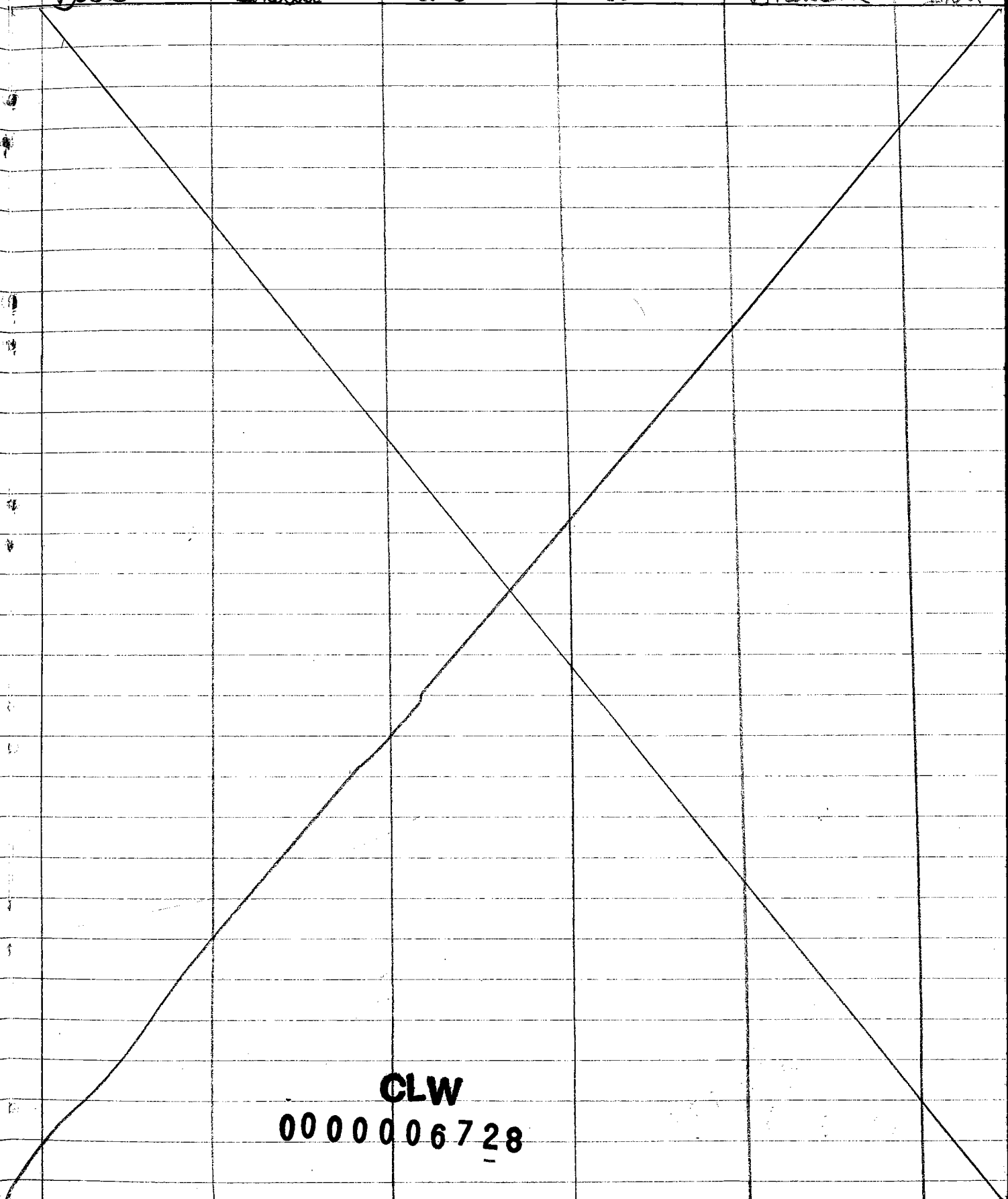
Static

Pumping
Level

Draw
Down

meter
Increased

open
Int.



CLW

0000006728

CLW
0000006729

CLW

0000006730

7/11

1234567890

CLW

0000006731

CLW

000006732

CLW
000006733

210
2270000000

CLW

000006734

CLW

000006735

CLW
000006736

CLW

0000006737

1998

2000000000

CLW

0000006738

CLW

0000006739

CLW
000006740

CLW

0000006741

1953
APR 10 1953

CLW

000006742

8.00
1510000

CLW

000006743

CLW
000006744

CLW

000006745

CLW

000006746

CLW

000006747

CLW

000006748

CLW
0000006749

CLW

000006750

CLW

000006751

CLW

000006752

CLW

0000006753

CLW

000006754

CLW

000006755

CLW

000006756

CLW

000006757

CLW

0000006758

CLW
000006759

CLW

000006760

CLW
000006761

CLW

000006762

CLW

000006763

CLW

000006764

CLW

0000006765

CLW

000006766

CLW

000006767

CLW

000006768

CLW

0000006769

CLW
000006770

CLW
000006771

CLW
000006772

CLW

000000773