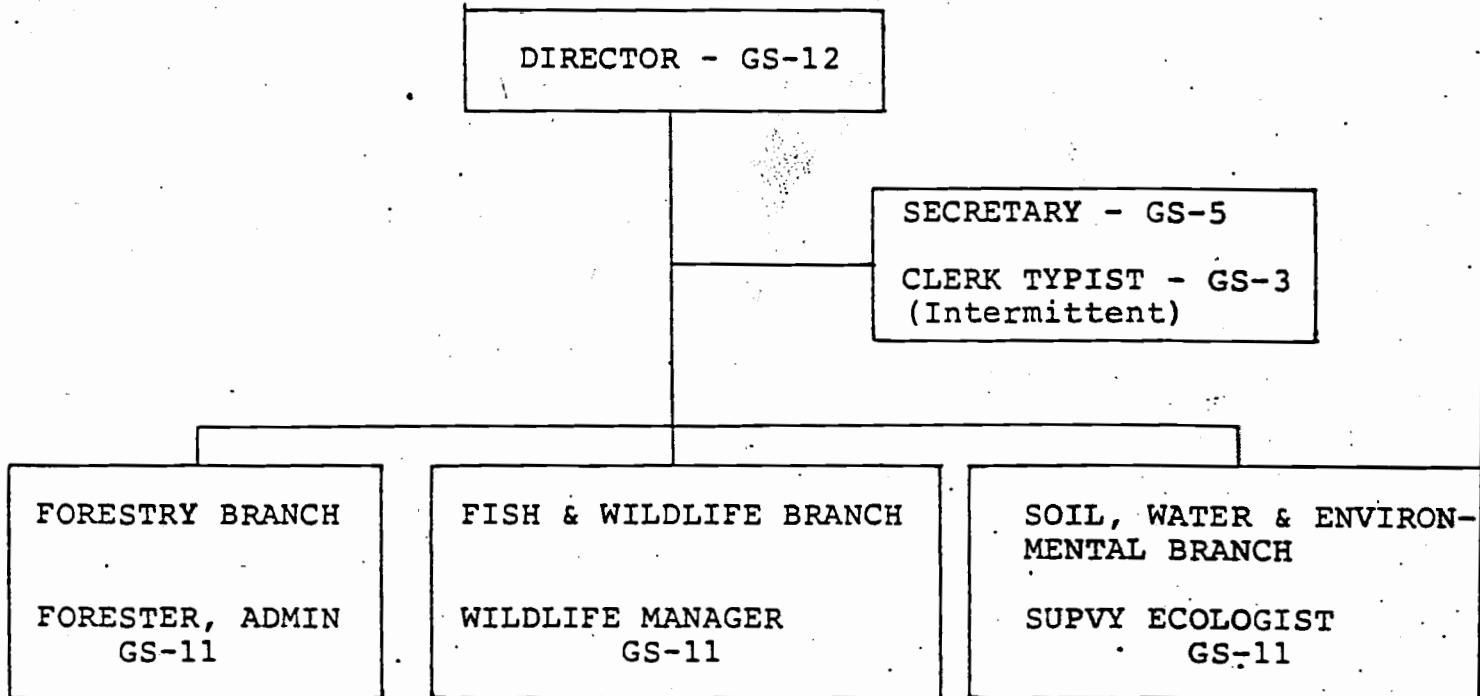


## INTRODUCTION

Marine Corps Base, Camp Lejeune, is required by Public Law and DOD and HQMC directives to implement and manage an effective natural resources and environmental program which meets both pertinent laws and regulations as well as the operational and training needs of Fleet Marine Force Tenants. Management of the environmental program falls under the staff cognizance of the Assistant Chief of Staff, Facilities. Authority to manage the program has been delegated to the Director, Natural Resources and Environmental Affairs Division.

00.000005.035

ADMINISTRATIVE/MANAGEMENT STAFF



0000005036

FORESTRY BRANCH

The Forestry Branch is tasked with managing, regenerating, improving and protecting the timber resources on the 72,042 acres of semi-improved and unimproved land within Camp Lejeune. The forestlands are managed on a sustained yield multiple-use system with military training receiving priority. That is to say that the forest is managed so as to provide a constant supply of goods, such as timber products, wildlife habitat, high quality water and aesthetic values through perpetuity. Neither of these forest resources can be maximized nor can any go unconsidered during management decisions.

CLW  
0000005037

BASE FORESTER, ADMIN - GS-11

ASSISTANT BASE FORESTER - GS-9

SENIOR FOREST TECHNICIAN - GS-7

FOREST TECHNICIAN - GS-5

FOREST TECHNICIAN - GS-4

FOREST TECHNICIAN - GS-4

FORESTRY AID - GS-3

Primary Duties

1. Wildfire Suppression
2. Prescribed Burning
3. Site Preparation
4. Reforestation
5. Insect and Disease Management
6. Timber Marking (Smaller Sales)
7. Timber Sale Contract  
(Administration (Smaller Sales))
8. Forest Administration

Continued

0000005038

BASE FORESTER, ADMIN - GS-11

TIMBER MANAGEMENT FORESTER - GS-9

FOREST TECHNICIAN - GS-5

FOREST TECHNICIAN - GS-4

FOREST TECHNICIAN - GS-4

Primary Duties

1. Compartment Prescription
2. Timber Marking (Large Sales)
3. Timber Sale Contract  
(Administration (Large Sales))

CLW  
0000005039

The forestry program is self-supporting from proceeds from the sale of timber products on the base. Estimated income from timber products sales in FY-84 is \$434,376.

FY-84 BUDGET

Forestry Management Salaries	\$229,760
Materials, Supplies, Equipment/Maintenance	<u>175,740</u>
Total Funds Required	\$415,500

CLW

0000005040

FORESTRY VEHICLES AND HEAVY EQUIPMENT

*See Note 1*  
~~(Owned by NREAD)~~

<u>Four-Wheel Drive Vehicles</u>	<u>No. of Vehicles</u>
Pickup Truck Crew Cab 4-door for Crew Transportation	3
Pickup Truck 2-door - $\frac{1}{2}$ Ton	2
Administrative Vehicle (Utility) - Passenger	2
Tractor and Lowbed Heavy Equipment Transport	2
TD-15 Lowground Pressure Bulldozer (Site Preparation)	1
D-4 Lowground Pressure Bulldozer (Planting & Prescribe Burning)	1

*These vehicles and equipment were purchased by base using Forestry funds.*

000005041

FISH AND WILDLIFE BRANCH

The Fish and Wildlife Branch is tasked with the following management responsibilities:

1. Fish Management
2. Game Species Management
3. Nongame Species Management
4. Endangered Species Management
5. Archaeological and Historical Resources Protection
6. Wildlife Law Enforcement

OLW  
0000005042



WILDLIFE MANAGER - GS-11

BIOLOGIST (WILDLIFE) - GS-7

BIOLOGICAL TECHNICIAN (WILDLIFE) - GS-7

Primary Duties

1. Endangered Species Management
2. Fish Management
3. Game Management
4. Nongame Management
5. Habitat Monitoring
6. Wildlife Censusing
7. Habitat Improvement
8. Environmental Assessment Review
9. Conservation, Environmental Reports
10. Wildlife Program Presentations to Military and Civilian Community

Continued

0000005043

WILDLIFE MANAGER - GS-11

ASSISTANT GAME PROTECTOR	SSGT
"	SGT
"	CPL
ADMINISTRATIVE CLERK	CPL
CHECK STATION ATTENDANT	CPL
"	CPL
*	L/CPL
*	L/CPL
*	L/CPL
*	L/CPL

\*-FAP (Fleet Assistance Personnel)

Primary Duties

1. Enforcement of base, state and federal regulations
2. Issuance of base hunting, fishing, trapping & firewood permits
3. Collection & accountability of public funds
4. Operation of hunter check station
5. Assignment of areas for hunting, fishing, trapping & collecting firewood
6. Collecting harvest information

0000005044

Fish and Wildlife funds are from Appropriated Funds and Nonappropriated Funds (Sale of Hunting, Fishing and Trapping Permits).

FY-84 BUDGET

Wildlife Personnel Salaries	\$ 94,248
Wildlife Management Projects	100,583
Wildlife Management Projects (Permit Funds)	<u>22,227</u>
Total Funds Required	\$217,058

0000005045

FISH AND WILDLIFE VEHICLES

Vehicles assigned by Base Motor Transport for use by wildlife function.

<u>Four-Wheel Drive Vehicles</u>	<u>No. of Vehicles</u>
Jeep (Wildlife Manager)	1
Jeep (Game Warden)	1
Pickup Truck (Biological Technician)	1
" (Biologist)	1
" (Game Warden)	1

CW  
0000005046

SOIL, WATER AND ENVIRONMENTAL BRANCH

The Soil, Water and Environmental Branch is tasked with providing professional and technical assistance to the Command and to base organizations and tenants on matters dealing with environmental protection, soils and wetlands management and environmental health.

00.000000047

SUPERVISORY ECOLOGIST - GS-11

ENVIRONMENTAL PROTECTION  
SPECIALIST - GS-9

SUPERVISORY CHEMIST  
GS-10

Primary Duties

Supervisory Ecologist, Supervisory Chemist and Environmental Protection Specialist are professional billets. In addition to supervisory and/or administrative duties, are primarily involved on a day-to-day basis in the following:

1. Monitoring industrial and domestic wastewater disposal
2. Management and disposal of hazardous materials and wastes
3. Coordination of oil and other hazardous substance spill prevention, control and countermeasures (SPCC) plan implementation
4. Serving as on-scene coordinator (OSC) for routine oil spills
5. Preparation of environmental reports
6. Providing on-site technical assistance to action sponsors involved in the preparation of environmental assessment and reviewing environmental impact assessments which are submitted to AC/S, Facilities for action
7. Soils and wetlands management, including erosion control, drainage and soil mapping/interpretation
8. Interpreting water quality data and developing recommendations for followup action.

Continued

SUPERVISORY ECOLOGIST - GS-11

SOIL CONSERVATION TECHNICIAN  
GS-6

Primary Duties

This is a subprofessional billet developed to provide technical assistance and engineering services in the areas of on-site sanitary waste disposal, erosion control and drainage and maintenance of military training areas and roads.

Continued

CLW

0000005049

SUPERVISORY ECOLOGIST - GS-11

SUPERVISORY CHEMIST - GS-10

PHYSICAL SCIENCE TECHNICIAN GS-7

" GS-6

" GS-6

" GS-5

Primary Duties

These technicians are subprofessional billets primarily involved in accomplishing sampling and laboratory analytical support required to monitor wastewater & drinking water as required by the Clean Water Act (NPDES Permit), the Safe Drinking Water Act (as implemented by the State of North Carolina and public health regulations of the Department of Defense.

0000005050



Actual branch operating expenses:

FY-84 BUDGET

Salaries	\$195,583
Laboratory Supplies & Equipment/Maintenance	20,000
Service Contracts for Laboratory Analysis	20,000
Equipment Purchases	17,100
TAD for Training & Professional Meetings	4,375
Studies	<u>20,000</u>
	Subtotal \$279,058
Projects identified by NREAD to Base Maintenance Division for O&M Funding	<u>84,000</u>
Total Funds Required	\$363,058

0000005051

SOIL, WATER AND ENVIRONMENTAL VEHICLES

Vehicles assigned by Base Motor Transport for use by Soil, Water and Environmental function.

<u>Four-Wheel Drive</u>	<u>No. of Vehicles</u>
Pickup Truck (Ecologist)	1
" (Environmental Protection Specialist)	1
" (Quality Control Laboratory)	1

0000005052