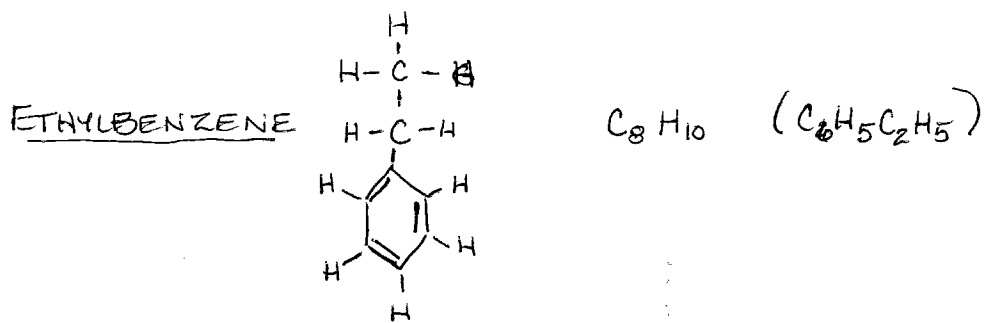


TEST WELLS

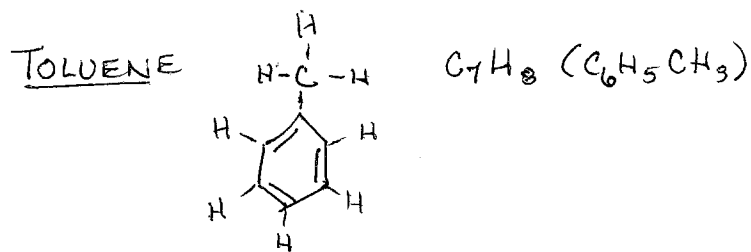
	UNITS = ppb			BDL = 10 ppb
	ETHYL-BENZENE	TOLUENE	XYLENE	OTHERS
LOCATION 5 (7/19/85) DEPTH 86-96 FT	4	9	26	ACETONE 6 ppb ETHYLHEXANOL 6 ppb
DEPTH 126-136 FT	4	8	26	ACETONE 42 ppb PENTANAL 15 ppb C ₆ H ₁₂ O 8 ppb HEPTANAL 6 ppb PROPYLBENZENE 4 ppb
LOCATION 6 (7/25/85) DEPTH 84-94	2	3	13	

CLW

0000005901

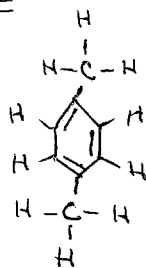


- FRACTIONAL DISTILLATION OF PETROLEUM

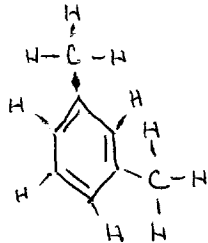


- FROM PETROLEUM

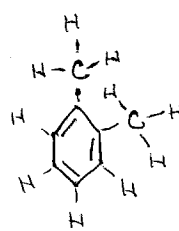
XYLENE



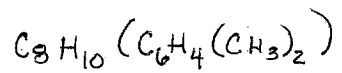
PARA-XYLENE



META-XYLENE

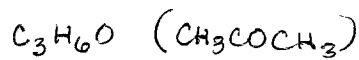
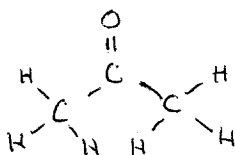


ORTHO-XYLENE (LEAST COMMON)



- FROM PETROLEUM

ACETONE

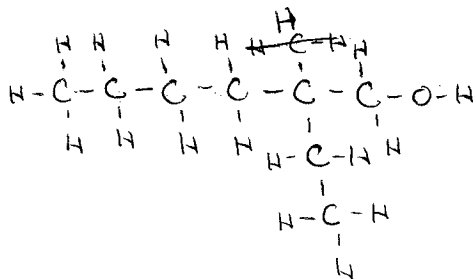
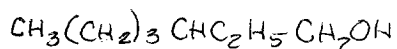


SOLVENT

CLW

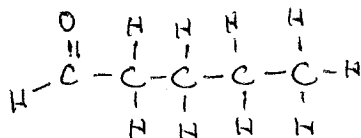
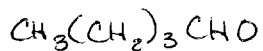
000005902

ETHYLHEXANOL (2-ETHYLHEXANOL, 2-ETHYLHEXYL ALCOHOL)



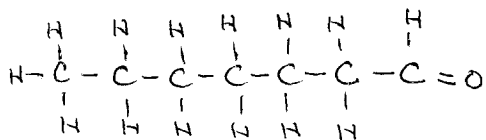
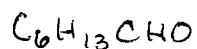
PLASTICIZER FOR PVC RESINS

PENTANAL (N-VALERALDEHYDE)

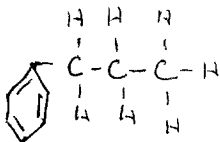


C₆H₁₂O (~~HEXANOL~~) (ALDEHYDE OR KETONE)

HEPTANAL (HEPTALDEHYDE)



PROPYLBENZENE (1-PHENYLPROPANE)



CLW

0000005903