



UNITED STATES MARINE CORPS

MARINE CORPS BASE
PSC BOX 20004
CAMP LEJEUNE, NORTH CAROLINA 28542-0004

IN REPLY REFER TO:

5090

BEMD

SEP 29 2005

Agency for Toxic Substances and Disease Registry
Attention: Mr. Morris L. Maslia
1600 Clifton Road
Mail Stop E-32
Atlanta, Georgia 30333

Dear Mr. Maslia:

As you are aware, the drinking water distribution systems at Marine Corps Base (MCB), Camp Lejeune have changed over the years. These system changes are accurately reflected in the Agency for Toxic Substances and Disease Registry's (ATSDR) July 2003 progress report: *Survey of Specific Childhood Cancers and Birth Defects Among Children Whose Mothers Were Pregnant While Living at U.S. Marine Corps Base Camp Lejeune, North Carolina, 1968-1985*. Specifically, the report reflects that the Holcomb Boulevard Treatment Plant came on-line in 1972 and served the Midway Park, Berkeley Manor, Watkins Village, and Paradise Point base-housing areas.

However, in the interest of completeness, and to answer questions about when the Holcomb Boulevard Treatment Plant came on-line, we are officially providing you with documentation in enclosures (1) to (4) to confirm the decision to use 1972 as the year the Holcomb Boulevard Treatment Plant came on-line.

Sincerely,

SCOTT A. BREWER, PE
Director, Environmental Management
By direction of
the Commanding General

- Enclosures:
1. NAVCOMPT FORM 265-1 (Acquisition Data)
 2. Plant Account Property Record Card
 3. Globe Article August 10, 1972
 4. Command Chronology 1 July to 31 December 1972

Copy to:
GAO
HQMC-LFL (w/o encl.)

REPORTING ACTIVITY NAME: (003) Marine Corps Base, Camp Lejeune, North Carolina 28542

REPORTING ACTIVITY UIC (004) 67001

RECORD NO. (001) 2-07260

RECORD DATE (002) 1973 (Yr) APR (Mo)

DATA ELEMENT NAME PROPERTY CLASS DE NO.

Refer to NAVFAC P-78 for Definitions and Instructions.

GENERAL INFORMATION

FACILITY NUMBER 2 (005) 670
 FACILITY TYPE 1&2 (006) 2
 ACTION TYPE 1&2 (007) 1
 HOUSING INDICATOR 1&2 (008) Yes No
 ENG EVALUATION DATE 2 (009) 1972 (Year) JUN (Mo)
 FACILITY NAME 2 (010)
 WTR TRMNT FACIL

LOCATION DATA

COUNTRY 1&2 (101) US
 STATE 1&2 (102) 37
 COUNTY 1&2 (103) 133
 CITY 1&2 (104) 0735
 AREA NAME 1&2 (106) KA
 MAP GRID 2 (107) 10K

ACQUISITION DATA, GENERAL

ESTATE 1&2 (201) 11
 ACQUISITION CONTRACT 1&2 (202) N6247070C0939
 ACQUISITION DATE 1&2 (203) 1972 (Year) AUG (Mo)
 COST TO U.S. GOVERNMENT 1&2 (204) \$ 772, 122
 APPRAISAL/ESTIMATE 1&2 (205) \$ N/A, Estimate
 APPRAISAL/ESTIMATE DATE 1&2 (206) N/A (Year) Appraisal
 LAND CATEGORY CODE 1&2 (207) 911 - 40
 SUSPENSE INDICATOR 1&2 (223) Yes No

ACQUISITION DATA, INGRANTED FACILITIES ONLY

DOD INSTALLATION 1&2 (208) Yes No
 RENT PAID 1&2 (209) \$ _____
 REFERENCE PROPERTY RECORD 1&2 (210) _____
 EFFECTIVE DATE 1&2 (211) _____ (Year) _____ (Mo) _____ (Day)
 EXPIRATION DATE 1&2 (212) _____ (Year) _____ (Mo) _____ (Day) or None
 MAXIMUM TERM 1&2 (213) _____

REPORTING ACTIVITY NAME (003) Marine Corps Base, Camp Lejeune, North Carolina 28542

REPORTING ACTIVITY UIC (004) 67001 RECORD NO (001) 2-07260

Refer to NAVFAC P-78 for
 Definitions and Instructions.

DATA ELEMENT NAME	PROPERTY CLASS	DE NO.	
<u>MEASUREMENTS</u>			
LENGTH	2	(301)	<u>114</u>
WIDTH	2	(302)	<u>53</u>
HEIGHT	2	(303)	<u>33</u>
AREA	2	(304)	<u>6,042</u>
NUMBER OF STORIES	2	(305)	<u>02</u>
HEATED VOLUME	2	(306)	<u>134,262</u>
IRREGULAR SHAPE	2	(307)	<input type="checkbox"/> Yes <input checked="" type="checkbox"/> No
IMPROVED ACRES	1	(351)	<u> </u>
SEMI-IMPROVED ACRES	1	(352)	<u> </u>
UNIMPROVED ACRES	1	(353)	<u> </u>
OTHER ACRES	1	(354)	<u> </u>
TOTAL ACRES	1	(355)	<u> </u>
USABLE UNUSED ACRES	1	(356)	<u> </u>
UNUSABLE UNUSED ACRES	1	(357)	<u> </u>

} Must add
 up to
 total acres
 (DE 355)

CONSTRUCTION DATA

YEAR BUILT	2	(401)	<u>1972</u> (Year)
CONSTRUCTION TYPE	2	(402)	<u>P</u>
LAST MAJOR IMPROVEMENT YEAR	2	(403)	<u>N/A</u> (Year)
ABMP CODE	2	(404)	<u>N/A</u>
FOUNDATION/PAVEMENT MATERIAL	2	(405)	<u>J9Y</u>
EXTERIOR WALL MATERIAL	2	(406)	<u>GL</u>
ROOF MATERIAL	2	(407)	<u>CJ</u>
INSULATION	2	(408)	<u>I</u>

EPCL(2)

STEP B450C821
RM = 02

PLANT RECORDRY - CLASS II
FACILITIES INVENTORY LISTING

CARD DATE	CARD NUMBER	CONS DATE	TYPE COMS	COST	CATG CODE	SYMB MEAS	AREA	DCM	FORM	CAC	BLDG	NUM.	BUILDING DESIGNATION	PROG. ADM.
1973	2-072665	1972	S	\$2100	84109	SF	144	00	265	7650	647	PUMP HOUSE	30	
1973	2-072666	1972	S	\$2100	84109	SF	96	00	265	7650	648	PUMP HOUSE	30	
1973	2-072667	1972	S	\$2100	84109	SF	96	00	265	7650	649	PUMP HOUSE	30	
1973	2-072668	1972	S	\$2100	84109	SF	96	00	265	7650	650	PUMP HOUSE	30	
1973	2-072669	1972	S	\$24490	84109	SF	108	00	265	7650	651	PUMP HOUSE	30	
1973	2-072700	1972	S	\$67008	84109	SF	144	00	265	7650	652	PUMP HOUSE	30	
0979	2-077801	1978	S	\$14755	84109	SF	144	00	265	7650	653	PUMP HOUSE	30	
0485	2-080809	1980	S	\$63032	84109	SF	1256	00	265	7650	654	PUMP HOUSE	30	
1280	2-083770	1980	S	\$125885	84109	SF	144	00	265	7650	655	PUMP HOUSE	30	
0385	2-083778	1984	S	\$125885	84109	SF	144	00	265	7650	656	PUMP HOUSE	30	
0385	2-083779	1984	S	\$125885	84109	SF	144	00	265	7650	657	PUMP HOUSE	30	
1973	2-072660	1972	S	\$875385	84109	SF	9186	00	265	7650	658	PUMP HOUSE	30	
0485	2-087511	1985	S	\$149954	83109	SF	426	00	265	7670	659	PUMP HOUSE	30	
0972	2-071870	1970	S	\$32580	83109	SF	1026	00	265	7760	660	PUMP HOUSE	30	
1280	2-071871	1980	S	\$6084	83109	SF	130	00	265	7760	661	PUMP HOUSE	30	
0858	2-089207	1984	S	\$2906	83109	SF	156	00	265	7760	662	PUMP HOUSE	30	
1061	2-091344	1985	S	\$5823	741035	SF	2592	00	265	7120	663	PUMP HOUSE	30	
0858	2-091345	1985	S	\$26733	741035	SF	2307	00	265	7120	664	PUMP HOUSE	30	
0858	2-091346	1985	S	\$26733	741035	SF	2307	00	265	7120	665	PUMP HOUSE	30	
0858	2-091347	1985	S	\$26733	741035	SF	2307	00	265	7120	666	PUMP HOUSE	30	
0858	2-091348	1985	S	\$26733	741035	SF	2307	00	265	7120	667	PUMP HOUSE	30	
0858	2-091349	1985	S	\$26733	741035	SF	2307	00	265	7120	668	PUMP HOUSE	30	
0858	2-091350	1985	S	\$26733	741035	SF	2307	00	265	7120	669	PUMP HOUSE	30	
0858	2-091351	1985	S	\$26733	741035	SF	2307	00	265	7120	670	PUMP HOUSE	30	
0858	2-091352	1985	S	\$26733	741035	SF	2307	00	265	7120	671	PUMP HOUSE	30	
0858	2-091353	1985	S	\$26733	741035	SF	2307	00	265	7120	672	PUMP HOUSE	30	
0858	2-091354	1985	S	\$26733	741035	SF	2307	00	265	7120	673	PUMP HOUSE	30	
0858	2-091355	1985	S	\$26733	741035	SF	2307	00	265	7120	674	PUMP HOUSE	30	
0858	2-091356	1985	S	\$26733	741035	SF	2307	00	265	7120	675	PUMP HOUSE	30	
0858	2-091357	1985	S	\$26733	741035	SF	2307	00	265	7120	676	PUMP HOUSE	30	
0858	2-091358	1985	S	\$26733	741035	SF	2307	00	265	7120	677	PUMP HOUSE	30	
0858	2-091359	1985	S	\$26733	741035	SF	2307	00	265	7120	678	PUMP HOUSE	30	
0858	2-091360	1985	S	\$26733	741035	SF	2307	00	265	7120	679	PUMP HOUSE	30	
0858	2-091361	1985	S	\$26733	741035	SF	2307	00	265	7120	680	PUMP HOUSE	30	
0858	2-091362	1985	S	\$26733	741035	SF	2307	00	265	7120	681	PUMP HOUSE	30	
0858	2-091363	1985	S	\$26733	741035	SF	2307	00	265	7120	682	PUMP HOUSE	30	
0858	2-091364	1985	S	\$26733	741035	SF	2307	00	265	7120	683	PUMP HOUSE	30	
0858	2-091365	1985	S	\$26733	741035	SF	2307	00	265	7120	684	PUMP HOUSE	30	
0858	2-091366	1985	S	\$26733	741035	SF	2307	00	265	7120	685	PUMP HOUSE	30	
0858	2-091367	1985	S	\$26733	741035	SF	2307	00	265	7120	686	PUMP HOUSE	30	
0858	2-091368	1985	S	\$26733	741035	SF	2307	00	265	7120	687	PUMP HOUSE	30	
0858	2-091369	1985	S	\$26733	741035	SF	2307	00	265	7120	688	PUMP HOUSE	30	
0858	2-091370	1985	S	\$26733	741035	SF	2307	00	265	7120	689	PUMP HOUSE	30	
0858	2-091371	1985	S	\$26733	741035	SF	2307	00	265	7120	690	PUMP HOUSE	30	
0858	2-091372	1985	S	\$26733	741035	SF	2307	00	265	7120	691	PUMP HOUSE	30	
0858	2-091373	1985	S	\$26733	741035	SF	2307	00	265	7120	692	PUMP HOUSE	30	
0858	2-091374	1985	S	\$26733	741035	SF	2307	00	265	7120	693	PUMP HOUSE	30	
0858	2-091375	1985	S	\$26733	741035	SF	2307	00	265	7120	694	PUMP HOUSE	30	
0858	2-091376	1985	S	\$26733	741035	SF	2307	00	265	7120	695	PUMP HOUSE	30	
0858	2-091377	1985	S	\$26733	741035	SF	2307	00	265	7120	696	PUMP HOUSE	30	
0858	2-091378	1985	S	\$26733	741035	SF	2307	00	265	7120	697	PUMP HOUSE	30	
0858	2-091379	1985	S	\$26733	741035	SF	2307	00	265	7120	698	PUMP HOUSE	30	
0858	2-091380	1985	S	\$26733	741035	SF	2307	00	265	7120	699	PUMP HOUSE	30	

zone

MAKING LIFE BETTER — A growing use — FOR CLINIC MARINES



...the ...
...the ...
...the ...

...the ...
...the ...
...the ...

...the ...
...the ...
...the ...



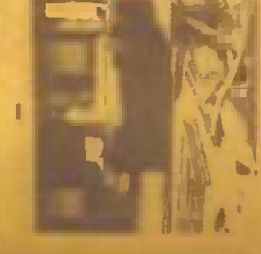
...the ...
...the ...
...the ...



...the ...
...the ...
...the ...



...the ...
...the ...
...the ...



...the ...
...the ...
...the ...



...the ...
...the ...
...the ...



...the ...
...the ...
...the ...



...the ...
...the ...
...the ...

ready for use this week. Built by the Dixie General Construction Company of Wallace, N.C., the building was officially accepted by Base officials this month.



WATER WORKS — The new Water Treatment Plant, well and distribution system here was recently accepted by the base and is now in full operation. The plant, located near the Main Gate off Holcomb Blvd., was built at a cost of \$1.8 million.

Globe

August 19, 1972



FOR CLNC MARINES

in a certain way according to law," he said. At least government representatives are present in the conference room of the Public Works Department when sealed envelopes are opened.

When a company submits a bid, it must also have a bond to cover the entire construction cost of that bid and also furnish a 20 percent bid bond that would cover expenses if they decide to withdraw. The general contractor is invited to attend these affairs and can watch as the bid is opened, examined and recorded to insure that it meets the military construction regulations.

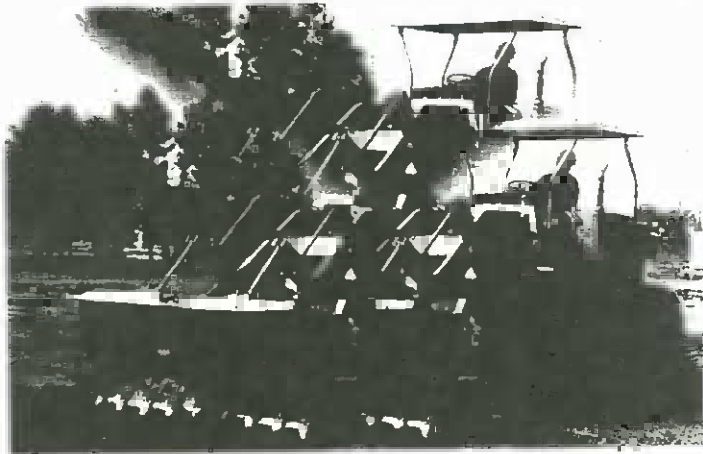
He went on to say that the last envelope to be opened is prepared by their office to show what the government bid the cost should be. "We then wait up to 10 days," he continued, "and carefully check each bid. Only then do we let the company know who will build that barracks."

He said that their contract specialists go over each bid with a fine tooth comb to insure that Uncle Sam is getting his money's worth.

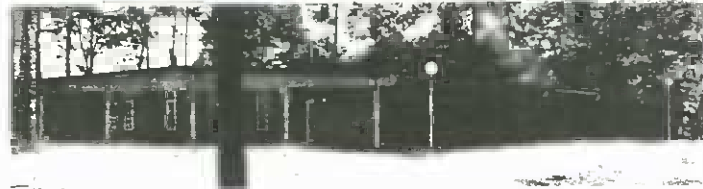
He mentioned that there is one exception to the bidding process and it works, in effect, in reverse. "When we ask for bids on timber harvesting on Base, the company who submits the largest bid and who will comply with regulations concerning ecological preservation will get the job. In fact, the money that we get in this case, goes directly to the Treasury of the United States and is not spent in any way, by the military or the Department of Defense."

Capt. Daggelt sees a bright future for the building program in the Camp Lejeune area and said that every effort is being made to get much needed structures and repairs done as soon as appropriations and contracts are made available.

Whatever the case, at the grass roots level where it counts, the young Marine eating in a new dining facility, looking forward to more and better facilities because someone is looking out for his best interest — better dining, living and recreational areas at this "World's Most Complete Amphibious Training Base."



THREE FOR ONE — A triple image of a bulldozer cuts into the topsoil of the area where the new 90 unit Hostess House will be built. The new facility, designed for transients coming to and leaving Camp Lejeune, will be completed in late spring at a cost of \$967,000. The triple image was created by a special device attached to the photographer's camera.

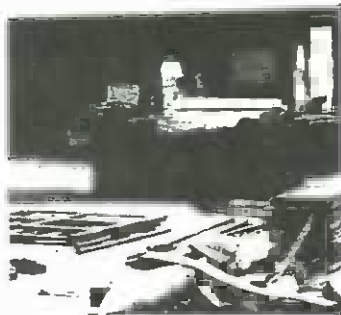


DENTAL BUILDING — The 2d Dental Company, 2d Marine Division, has been presented the new Dental Building located on River Road. Patients will soon be treated in early September in the new facility as soon as furniture and supplies are moved in and installed.



FIRST STEP — An empty field is all one sees of the new Hostess House which will be built next to the bank on Holcomb Blvd. Members of Daniec Construction Company, Jacksonville, Fla.,

have moved on the property with a trailer-office and have begun constructing work sheds while earth grading equipment strips the top soil for work preparation.



FINISHING TOUCHES — Workmen put the finishing touches on the interior of the new Post Office building on the Main Service Road here.



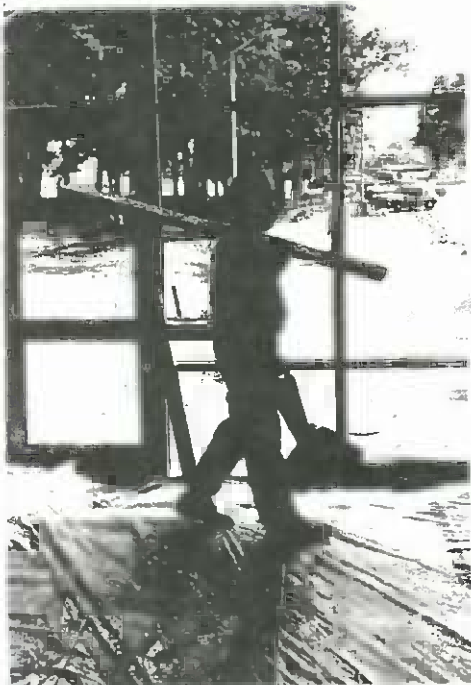
BIG BOSS — Captain Robert E. Daggelt, (CEC, USN) is the officer in charge of all construction in the New River - Camp Lejeune Area. Wearing two large hats as both officer in charge and resident officer in charge, he is responsible for the handling of bids and construction money that originate both locally and from higher offices in Norfolk and Washington, D.C.

August 19, 1972

Globe

©

MAKING LIFE BETTER — A growi



WALKING THE PLANK — Harry Lee Norman, carpenter with the Marine Exchange, carries a piece of lumber to install on the walls of the Exchange Service building located next to the Main Exchange. Plans call for the exchange personnel to move into the new building this week.

Photo feature by GySgt. Jack Hoisomback
 Military construction at Camp Lejeune is big business. During the past year some \$15 million was spent in the area of military construction in order to make Camp Lejeune a better place for the training of Marines. Those in charge hope that — with congressional approval — the building budget will increase during the next year.

Many of the future projects, like a number of those recently completed and under construction, are for the comfort and convenience of Marines and their families assigned to this base. Other projects are designed with an eye toward increased efficiency and more complete training capabilities for the 2d Marine Division, Force Troops and Marine Corps Base commands.

The man ultimately responsible for the military construction program in the Camp Lejeune — New River area is Capt. Robert E. Daggett, Civil Engineer Corps, U.S. Navy. His official title is Public Works Officer.

His command relationship, however, is somewhat complex. He has the additional title of Officer in Charge of Construction when administering to projects under the cognizance of Marine Corps Base. But his title changes to Resident Officer in Charge of Construction when handling those projects which fall under the purview of the Naval Facilities Command in Norfolk.

A staff of about 40 carries out the Public Works mission here. Their office is located in the Industrial Area in Bldg. 1005.

Capt. Daggett said the single Marine here will be the benefactor of many of the projects awaiting legislative action. Meanwhile, several large projects have recently been finished and others are nearing completion. The Division Dental Clinic on River Road and the Division Maintenance complex in the Industrial Area have been turned over to their respective organizations and should be open for business in the near future.

The new Base Post Office scheduled to be completed in Moneywise, the \$491,000 Post Office is overshadowed by the newly completed treatment plant located near the facility turned over to the Base furnishing the much needed water.

The confines at the Corrections from a newly constructed building behind the complex, will house woodworking and furniture refinishing provide training in practical skills. Officials say that plans call for refinishing and repairing furniture areas on base.

Another new building, completing finishing touches to the interior, service building, located next to estimated that these offices will

Closest to home among military started Hostess House, going to Exchange area and bank. Construction will especially benefit those people Lejeune and in need of temporary building should be completed in

With so much money at stake Lejeune, infinite care must be dollar and insuring that the worth. Capt. Daggett explains scale is done by civilian contractor construction cost. "If they bid too low, they lose the job, yet if they bid too high, they lose the money."

Locally, when a decision is made on barracks, his office announces. They then publish information with the time and place that the "When we open the bids, we



READY FOR OCCUPANCY — The new Marine Exchange service building located next to the Main Exchange will be ready for use this week. Built by the Dixie General Construction Company of Wallace, N.C., the building was officially accepted by Base officials this month.



DOUBLE CHECK — Conway J. Powell (L), Director of the Department of Construction, and Jim Gavin, architect, carefully check the blueprints for the new Post Office building slated for Camp Lejeune.



WATER WORKS — The new Water Treatment Plant, well and distribution system here was recently accepted by the base and is now in full operation. The plant, located near the Main Gate off Holcomb Blvd., was built at a cost of \$1.8 million.



POST OFFICE — David Russell, a motor grader operator with the construction Co., Jacksonville, checks over his machine and parking lots at the new Post Office building. The \$491,000, is scheduled to be completed this fall.

COMMAND CHRONOLOGY
OF
MARINE CORPS BASE
CAMP LEJEUNE, NORTH CAROLINA

PREPARED FOR
COMMANDANT OF THE MARINE CORPS
UNDER AUTHORITY OF MCO 5750.2C

1. Organization/staff office designation

Base Maintenance Department

2. Period covered

1 July - 31 December 1972

3. Commanding officers and/or principal staff officer

Colonel E. A. VOM ORDE, JR., Base Maintenance Officer

4. Average monthly strength during period

Not applicable.

5. Chronological listing of significant events

a. A new water treatment facility was placed in service. Design capacity of the facility is 2,000,000 gallons per 24-hour period. Ten new deep water wells were placed in operation. The wells have a combined capacity of 5,210,720 gallons per 24-hour period.

b. Base Maintenance Department established and began using a sanitary landfill. The burn and cover procedure was discontinued. This site was graded, covered with two feet of clay and topsoil, fertilized, and seeded. The borrow pit area was converted into a fish pond. The entire site will be utilized as a recreation area.

c. Telephone system for Onslow Beach was upgraded. Upgrading consisted of placing all cables and drop-wire underground, expanding capability in line capacity, and improving voice quality.

6. Documentation

Base Order 11090.1, Spill Prevention, Containment, and Countermeasure Plan for Oil and Other Hazardous Substances, was published on 29 September 1972.



UNITED STATES MARINE CORPS
MARINE CORPS BASE
CAMP LEJEUNE, NORTH CAROLINA 28542

IN REPLY REFER TO
3E/MJB/bh
5750
9 Feb 1973

From: Commanding General
To: Commandant of the Marine Corps (Code HD)
Subj: Command Chronology 1 July to 31 December 1972
Ref: (a) MCO P5750.2C

1. In accordance with reference (a), the subject report is forwarded.

J. J. Snyder
J. J. SNYDER
By direction