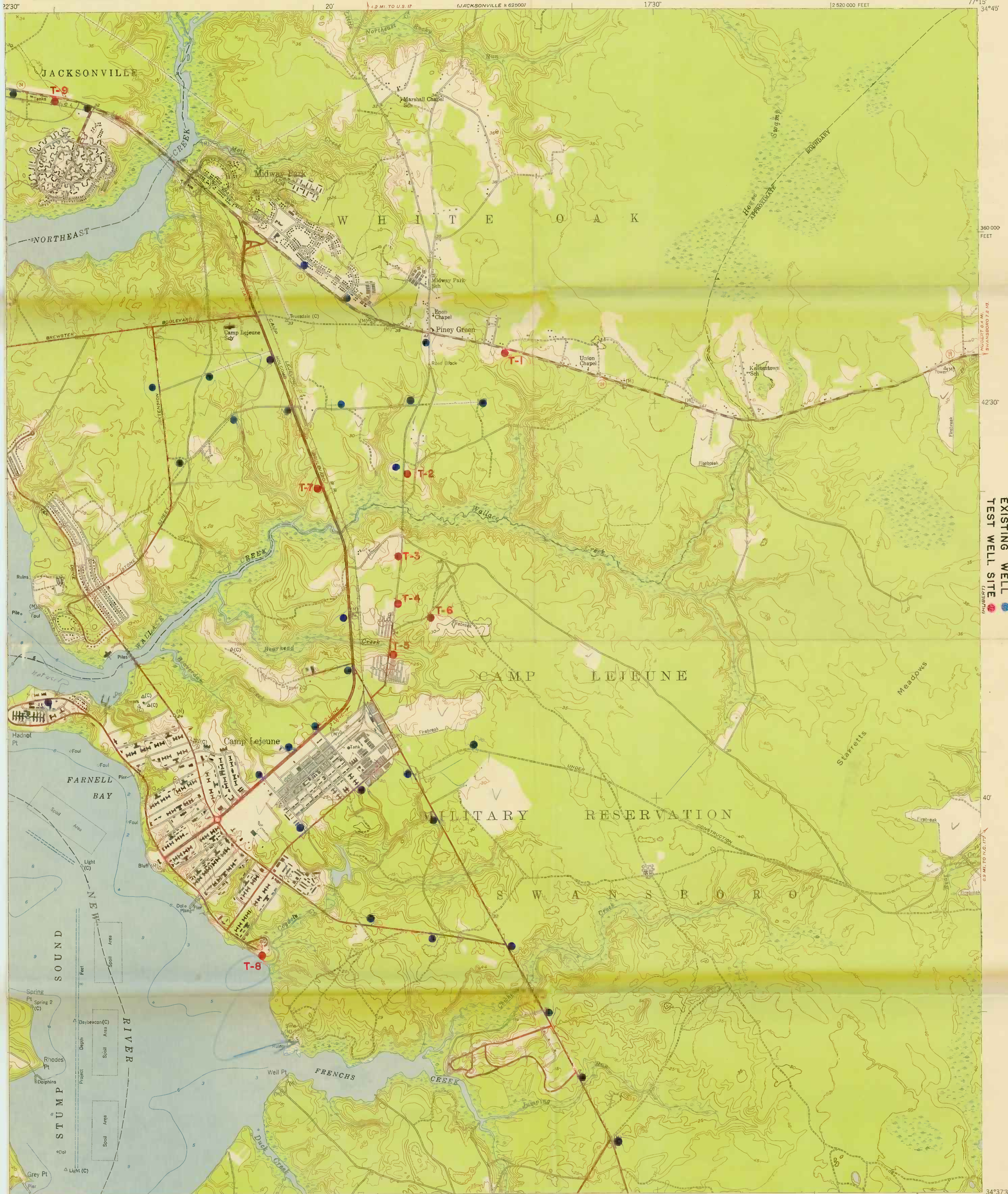
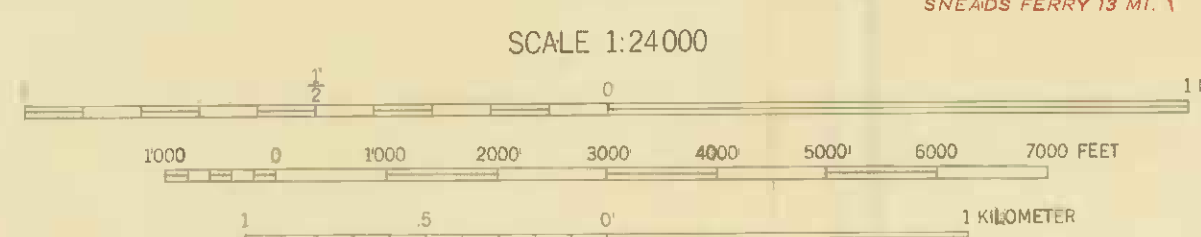


JACKSONVILLE
1:62,500

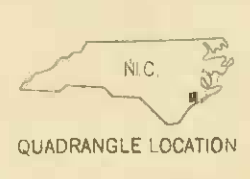


TARAWA TERRACE AND HADNOT POINT
EXISTING WELL TEST WELL SITE

Mapped by the U. S. Coast & Geodetic Survey
Edited and published by the Geological Survey
Control by USC&GS (C), USMC (M), and USN (N)
Culture and drainage in part compiled from aerial photographs
taken 1949 and 1952. Topography by plane-table surveys, USC&GS
and U. S. Navy Public Works 1951 and 1952. Field check 1952
Hydrography from USC&GS surveys dated 1933
Polyconic projection. 1927 North American datum
10,000-foot grid based on North Carolina coordinate system



CONTOUR INTERVAL 5 FEET
DATUM IS MEAN SEA LEVEL
DEPTH CURVES AND SOUNDINGS IN FEET—DATUM IS MEAN LOW WATER
SHORELINE SHOWN REPRESENTS THE APPROXIMATE LINE OF MEAN HIGH WATER
THE MEAN RANGE OF TIDE IS 2 FEET



ROAD CLASSIFICATION
Heavy-duty 4 LANE 16 LANE Light-duty
Medium-duty 4 LANE 16 LANE Unimproved dirt
U. S. Route State Route

CAMP LEJEUNE, N. C.
NE/4 NEW RIVER 15' QUADRANGLE
N3437.5—W7715/7.5

1952

THIS MAP COMPLIES WITH NATIONAL MAP ACCURACY STANDARDS
FOR SALE BY U. S. GEOLOGICAL SURVEY, WASHINGTON 25, D. C.
& FOLDER DESCRIBING TOPOGRAPHIC MAPS AND SYMBOLS IS AVAILABLE ON REQUEST